

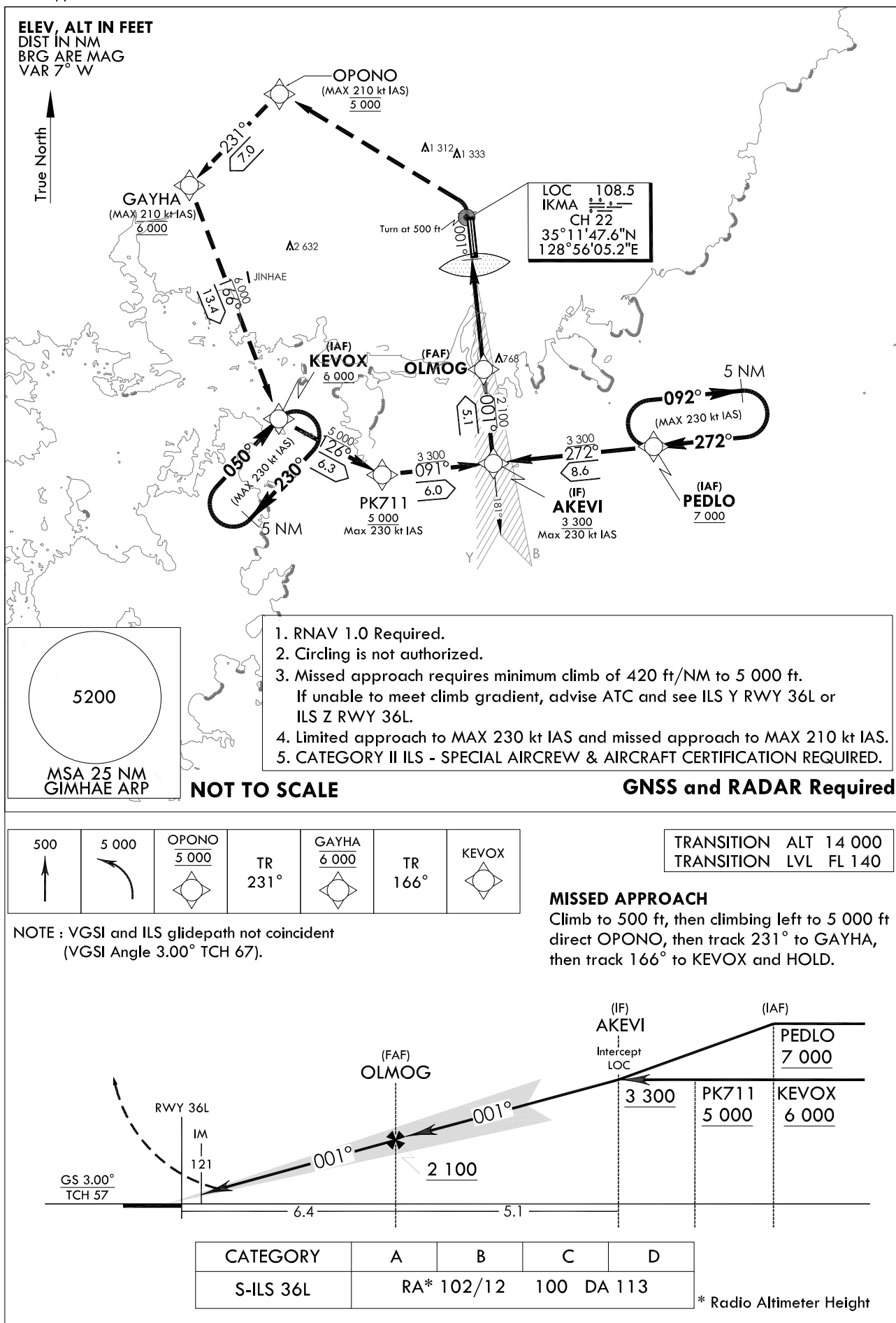
**INSTRUMENT  
APPROACH  
CHART**

**AERODROME ELEV 13 ft**  
**HEIGHTS RELATED TO**  
**RWY 36L ELEV TDZ 13 ft**

GIMHAE APP 125.5 364.0  
GIMHAE TWR 118.1 118.45  
233.3 236.6

**BUSAN/Gimhae Intl(RKPK)**  
**ILS RWY 36L**  
**CAT II**

Note : Approach and circle to land under U.S. TERPS.



Change : Page control.

## AERONAUTICAL DATA TABULATION

## Instrument Approach Procedure Coding Tables

## ILS RWY 36L CAT II - via PEDLO to AKEVI(IF)

Serial Number	Path Descriptor	Waypoint Identifier	Fly-over	Course/Track °M(T)	Distance (NM)	Turn direction	Altitude (ft)	Speed (kt)	Coordinates	VPA/TCH	Navigation specification	Remarks
001	-	PEDLO	-	-	-	-	+7 000	-230	34°59'23.1"N 129°08'15.3"E	-	RNAV 1	IAF
002	TF	AKEVI	-	271.5(264.1)	8.6	-	+3 300	-230	34°58'29.0"N 128°57'48.0"E	-	RNAV 1	IF

## ILS RWY 36L CAT II - via KEVOX to AKEVI(IF)

Serial Number	Path Descriptor	Waypoint Identifier	Fly-over	Course/Track °M(T)	Distance (NM)	Turn direction	Altitude (ft)	Speed (kt)	Coordinates	VPA/TCH	Navigation specification	Remarks
001	-	KEVOX	-	-	-	-	+6 000	-230	35°00'51.7"N 128°43'47.2"E	-	RNAV 1	IAF
002	TF	PK711	-	125.8(118.3)	6.3	-	+5 000	-230	34°57'51.9"N 128°50'32.3"E	-	RNAV 1	SDF
002	TF	AKEVI	-	091.5(084.1)	6.0	-	+3 300	-230	34°58'29.0"N 128°57'48.0"E	-	RNAV 1	IF

## ILS RWY 36L CAT II - via AKEVI(IF) to MAHF

Serial Number	Path Descriptor	Waypoint Identifier	Fly-over	Course/Track °M(T)	Distance (NM)	Turn direction	Altitude (ft)	Speed (kt)	Coordinates	VPA/TCH	Navigation specification	Remarks
001	TF	AKEVI	-	-	-	-	+3 300	-230	34°58'29.0"N 128°57'48.0"E	-	RNAV 1	IF
002	TF	OLMOG	-	001.4(354.0)	5.1	-	+2 100	-	35°03'32.1"N 128°57'09.1"E	-	-	FAF
003	-	DA	-	001.4(354.0)	-	-	+113	-	-	-	LOC	DA
004	-	RWY 36L	-	001.4(354.0)	-	-	-	-	35°09'54.7"N 128°56'19.8"E	3.0/57	LOC	-
005	VA	-	-	001.4(354.0)	-	-	+500	-210	-	-	RNAV 1	CG 420 ft/NM to 5 000 ft
006	DF	OPONO	-	-	-	L	@5 000	-210	35°18'24.2"N 128°43'46.2"E	-	RNAV 1	-
007	TF	GAYHA	-	231.2(223.8)	7.0	-	@6 000	-210	35°13'22.4"N 128°37'54.4"E	-	RNAV 1	-
008	TF	KEVOX	-	166.3(158.9)	13.4	-	+6 000	-230	35°00'51.7"N 128°43'47.2"E	-	RNAV 1	-

## HOLDING PROCEDURE

Holding Identification	Path Descriptor	Waypoint Identifier	Fly-over	Course/Track °M(T)	Distance (NM)	Turn direction	Altitude (ft)	Speed (kt)	Coordinates	VPA/TCH	Navigation specification	Remarks
ILS RWY 36L CAT II	HM	PEDLO	-	271.7 (264.2)	5.0	R	+7 000	-230	34°59'23.1"N 129°08'15.3"E	-	RNAV 1	Hold at PEDLO E Right Turn 272° Inbound 5 NM Leg.
	HM	KEVOX	-	050 (042.5)	5.0	R	+6 000	-230	35°00'51.7"N 128°43'47.2"E	-	RNAV 1	Hold at KEVOX SW Right Turn 050° Inbound 5 NM Leg.

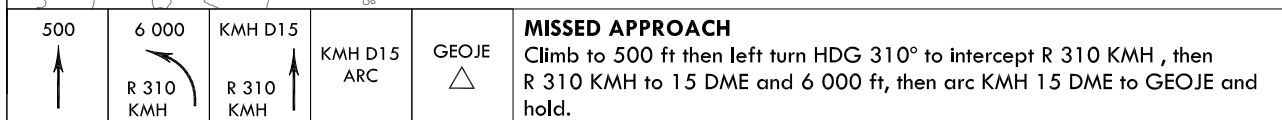
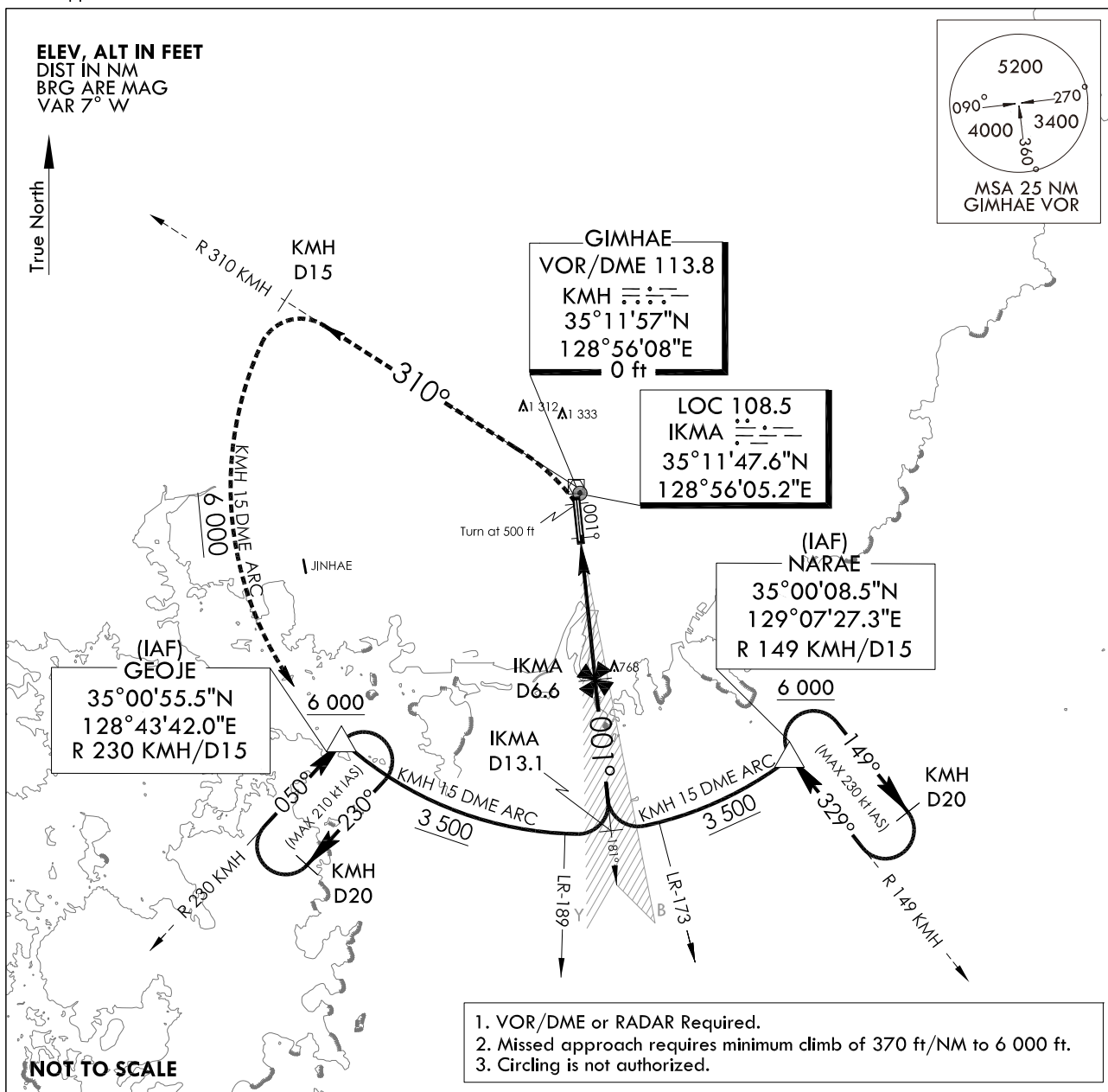
**INSTRUMENT  
APPROACH  
CHART**

**AERODROME ELEV** 13 ft  
**HEIGHTS RELATED TO**  
**RWY 36L ELEV TDZ** 13 ft

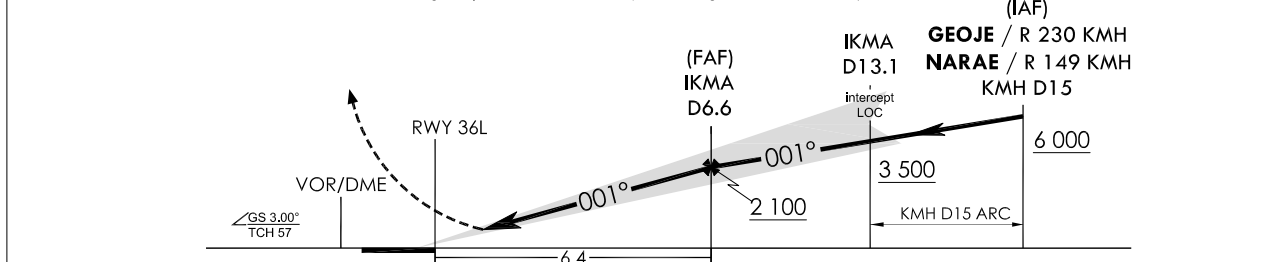
GIMHAE APP 125.5 364.0  
GIMHAE TWR 118.1 118.45  
233.3 236.6

**BUSAN/Gimhae Intl(RKPK)**  
**ILS Y**  
**RWY 36L**

Note : Approach and circle to land under U.S. TERPS.



**NOTE**  
Use IKMA DME when on the localizer course.  
VGSI and ILS glidepath not coincident(VGSI Angle 3.00° TCH 67).



CATEGORY	A	B	C	D
S-ILS 36L	213/18 200 (200 - 1/2)	213/24* 200(200-1/2) (*Use civil only RVR 18)		
	When TDZ/CL LGT INOP, increase RVR to 24			
ALS INOP	213/40 200(200 - 3/4)			

Change : Amended ILS plan view symbol.

**INTENTIONALLY**

**LEFT**

**BLANK**

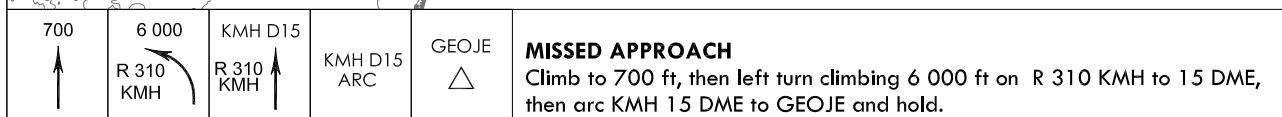
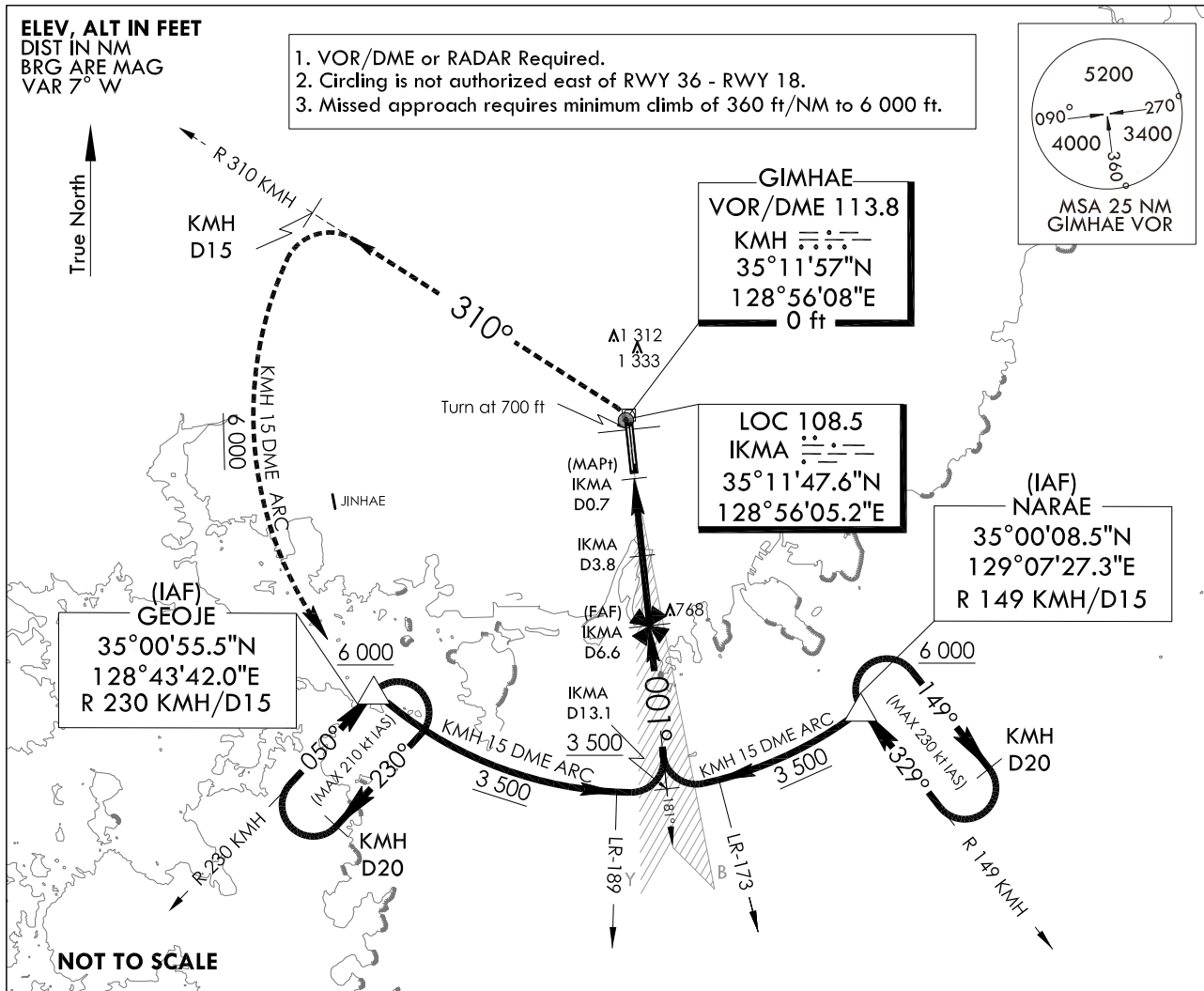
**INSTRUMENT  
APPROACH  
CHART**

**AERODROME ELEV** 13 ft  
HEIGHTS RELATED TO  
**THR RWY 36L** - ELEV 12 ft

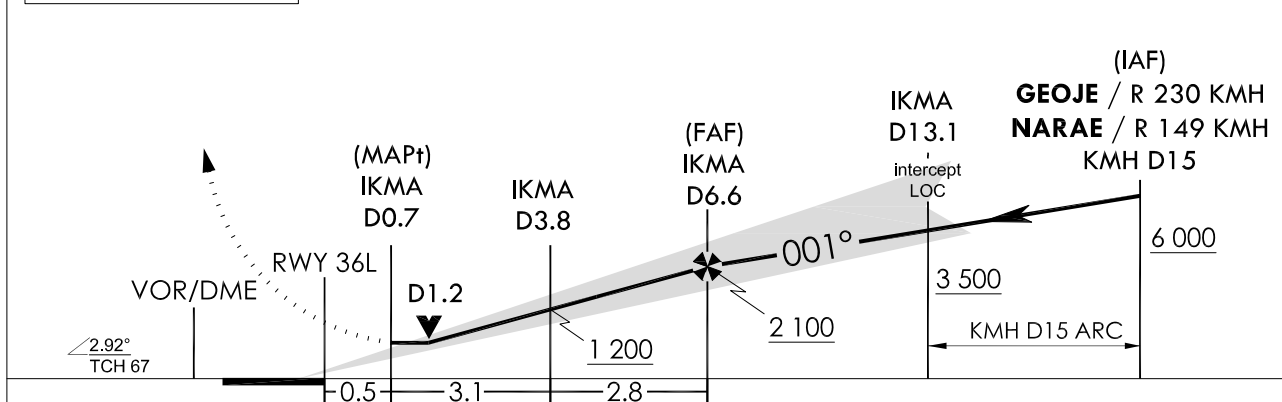
GIMHAE APP 125.5 364.0  
GIMHAE TWR 118.1 118.45  
233.3 236.6

**BUSAN/Gimhae Intl(RKPK)**  
**LOC/DME Y**  
**RWY 36L**

Note : Approach and circle to land under U.S. TERPS.



TRANSITION	ALT	14 000
TRANSITION	LVL	FL 140



CATEGORY	A	B	C	D
S-LOC 36L	400/24 388(400 - 1/2)		400/35 388(400 - 5/8)	
ALS INOP	400/55 388(400 - 1)		400/60 388(400 - 1 1/8)	
CIRCLING	520-1 507(600 - 1)	580-1 567(600 - 1)	1 360 - 3 1 347(1 400 - 3)	1 700 - 3 1 687(1 700 - 3)

Change : Information of RWY ELEV format.

**INTENTIONALLY**

**LEFT**

**BLANK**

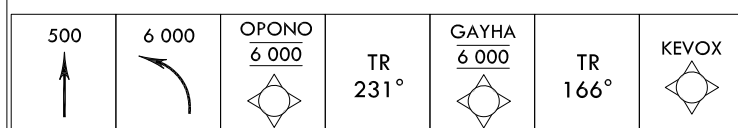
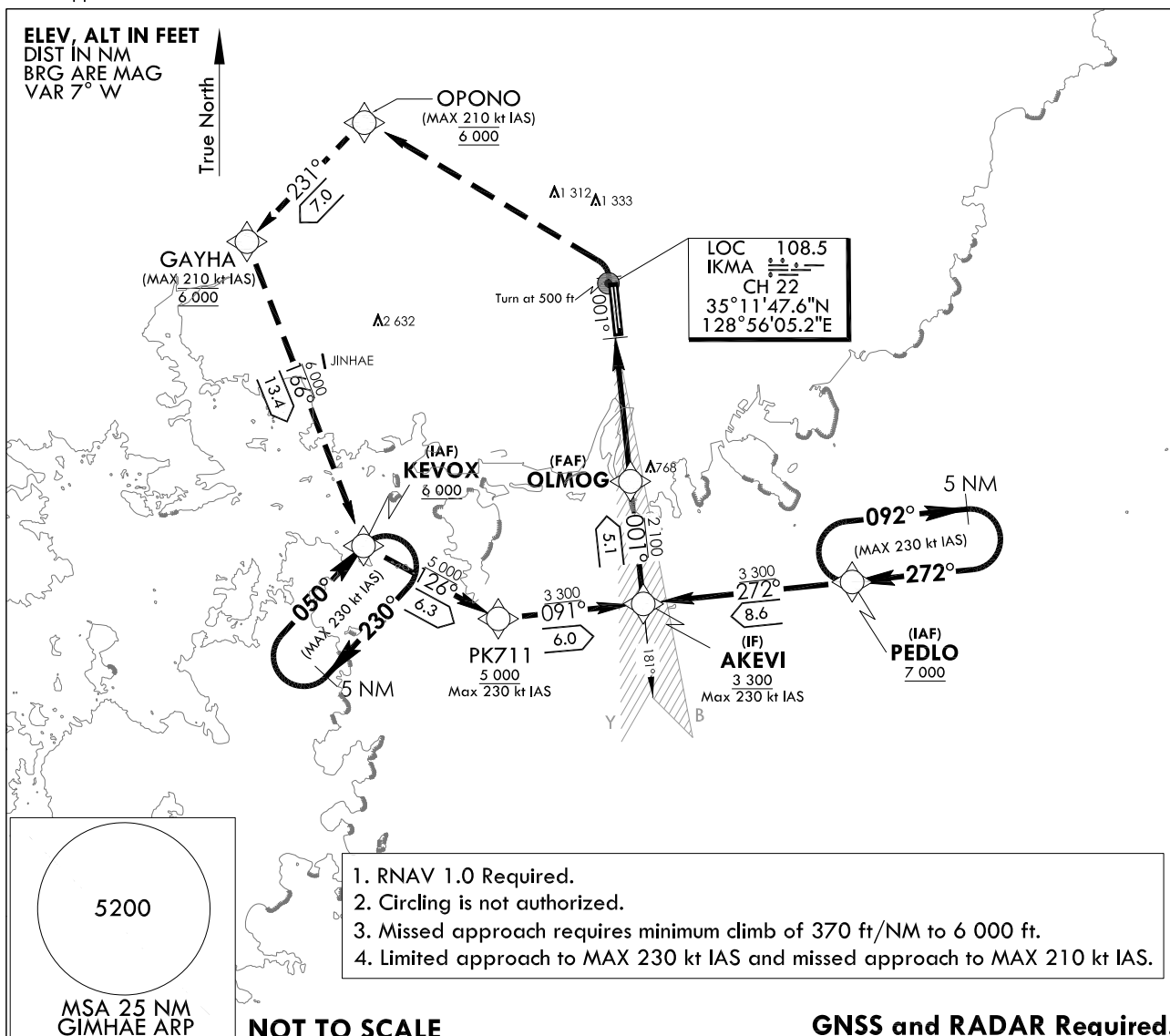
**INSTRUMENT  
APPROACH  
CHART**

**AERODROME ELEV 13 ft**  
**HEIGHTS RELATED TO**  
**RWY 36L ELEV TDZ 13 ft**

GIMHAE APP 125.5 364.0  
GIMHAE TWR 118.1 118.45  
233.3 236.6

**BUSAN/Gimhae Intl(RKPK)**  
**ILS Z**  
**RWY 36L**

Note : Approach and circle to land under U.S. TERPS.

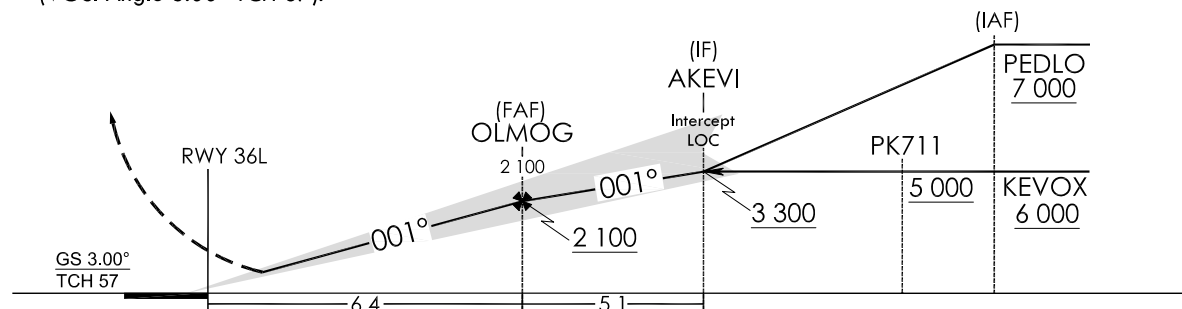


TRANSITION ALT 14 000  
TRANSITION LVL FL 140

**MISSED APPROACH**

Climb to 500 ft, then climbing left to 6 000 ft direct Opono, then track 231° to GAYHA, then track 166° to KEVOX and HOLD.

NOTE : Use IKMA DME when on the localizer course.  
NOTE : VGSI and ILS glidepath not coincident  
(VGSI Angle 3.00° TCH 67).



CATEGORY	A	B	C	D
S-ILS 36L	213/18	200(200 - 1/2)		
	When TDZ/CL LGT INOP, increase RVR to 24			
ALS INOP	213/40	200(200 - 3/4)		

Change : Page control.

BUSAN/Gimhae INTL(RKPK)

ILS Z  
RWY 36L

## AERONAUTICAL DATA TABULATION

## Instrument Approach Procedure Coding Tables

ILS Z RWY 36L - via PEDLO to AKEVI(IF)

Serial Number	Path Descriptor	Waypoint Identifier	Fly-over	Course/Track °M(T)	Distance (NM)	Turn direction	Altitude (ft)	Speed (kt)	Coordinates	VPA/TCH	Navigation specification	Remarks
001	-	PEDLO	-	-	-	-	+7 000	-230	34°59'23.1"N 129°08'15.3"E	-	RNAV 1	IAF
002	TF	AKEVI	-	271.5(264.1)	8.6	-	+3 300	-230	34°58'29.0"N 128°57'48.0"E	-	RNAV 1	IF

ILS Z RWY 36L - via KEVOX to AKEVI(IF)

Serial Number	Path Descriptor	Waypoint Identifier	Fly-over	Course/Track °M(T)	Distance (NM)	Turn direction	Altitude (ft)	Speed (kt)	Coordinates	VPA/TCH	Navigation specification	Remarks
001	-	KEVOX	-	-	-	-	+6 000	-230	35°00'51.7"N 128°43'47.2"E	-	RNAV 1	IAF
002	TF	PK711	-	125.8(118.3)	6.3	-	+5 000	-230	34°57'51.9"N 128°50'32.3"E	-	RNAV 1	SDF
002	TF	AKEVI	-	091.5(084.1)	6.0	-	+3 300	-230	34°58'29.0"N 128°57'48.0"E	-	RNAV 1	IF

ILS Z RWY 36L - via AKEVI(IF) to MAHF

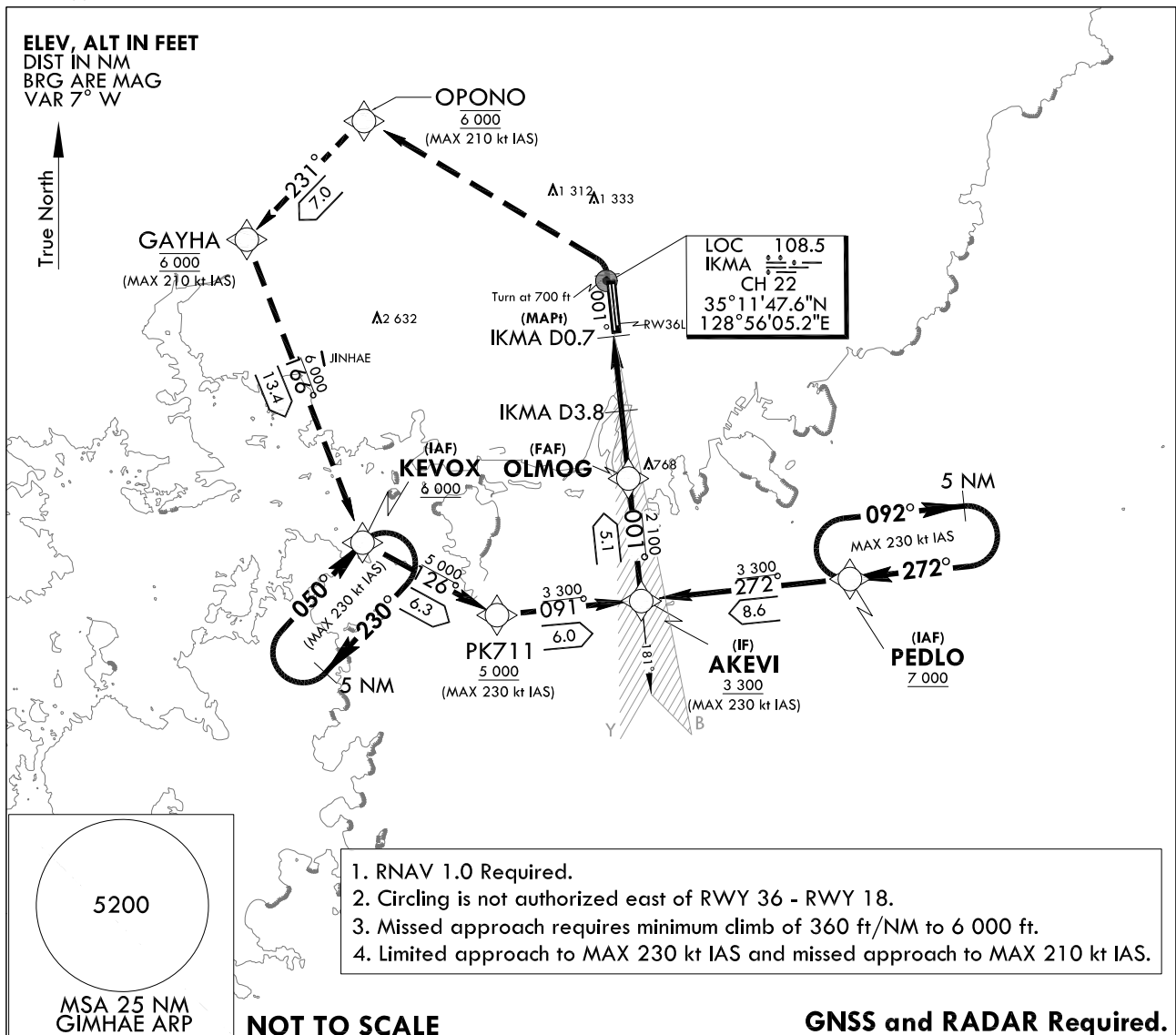
Serial Number	Path Descriptor	Waypoint Identifier	Fly-over	Course/Track °M(T)	Distance (NM)	Turn direction	Altitude (ft)	Speed (kt)	Coordinates	VPA/TCH	Navigation specification	Remarks
001	TF	AKEVI	-	-	-	-	+3 300	-230	34°58'29.0"N 128°57'48.0"E	-	RNAV 1	IF
002	TF	OLMOG	-	001.4(354.0)	5.1	-	+2 100	-	35°03'32.1"N 128°57'09.1"E	-	-	FAF
003	-	DA	-	001.4(354.0)	-	-	-	-	-	-	LOC	DA
004	-	RWY 36L	-	001.4(354.0)	-	-	-	-	35°09'54.7"N 128°56'19.8"E	3.0/57	LOC	-
005	VA	-	-	001.4(354.0)	-	-	+500	-210	-	-	RNAV 1	CG 370 ft/NM to 6 000 ft
006	DF	OPONO	-	-	-	L	@6 000	-210	35°18'24.2"N 128°43'46.2"E	-	RNAV 1	-
007	TF	GAYHA	-	231.2(223.8)	7.0	-	@6 000	-210	35°13'22.4"N 128°37'54.4"E	-	RNAV 1	-
008	TF	KEVOX	-	166.3(158.9)	13.4	-	+6 000	-230	35°00'51.7"N 128°43'47.2"E	-	RNAV 1	-




**AERODROME ELEV** 13 ft  
**HEIGHTS RELATED TO**  
**THR RWY 36L - ELEV** 12 ft

GIMHAE	APP	125.5	364.0
GIMHAE	TWR	118.1	118.45
		233.3	236.6

**BUSAN/Gimhae Intl(RKPK)**  
**LOC/DME Z**  
**RWY 36L**

Note : Approach and circle to land under U.S. TERPS.



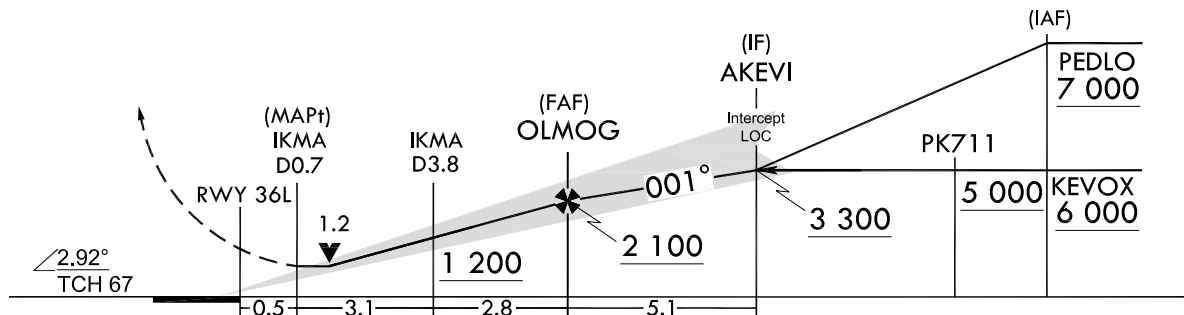
700 ↑	6 000 ↖	OPONO <u>6 000</u> 	TR 231°	GAYHA <u>6 000</u> 	TR 166°	KEVOX 
----------	------------	--------------------------------------------------------------------------------------------------------------	------------	--------------------------------------------------------------------------------------------------------------	------------	----------------------------------------------------------------------------------------------


NOTE : Use IKMA DME when on the localizer course.

TRANSITION	ALT	14 000
TRANSITION	LVL	FL 140

### MISSED APPROACH

Climb to 700 ft, then climbing left to 6 000 ft direct OPONO, then track 231° to GAYHA, then track 166° to KEVOX and HOLD.



CATEGORY	A	B	C	D
S-LOC 36L	400/24	388(400 - 1/2)	400/35	388(400 - 5/8)
ALS INOP	400/55	388(400 - 1)	400/60	388(400 - 1 1/8)
 CIRCLING	520-1 507(600 - 1)	580-1 567(600 - 1)	1 360 - 3 1 347(1 400 - 3)	1 700 - 3 1 687(1 700 - 3)

BUSAN/Gimhae INTL(RKPK)  
LOC/DME Z  
RWY 36L

## AERONAUTICAL DATA TABULATION

## Instrument Approach Procedure Coding Tables

LOC/DME Z RWY 36L - via PEDLO to AKEVI(If)

Serial Number	Path Descriptor	Waypoint Identifier	Fly-over	Course/Track °M(°T)	Distance (NM)	Turn direction	Altitude (ft)	Speed (kt)	Coordinates	VPA/ TCH	Navigation specification	Remarks
001	-	PEDLO	-	-	-	-	+7 000	-230	34°59'23.1"N 129°08'15.3"E	-	RNAV 1	IAF
002	TF	AKEVI	-	271.5(264.1)	8.6	-	+3 300	-230	34°58'29.0"N 128°57'48.0"E	-	RNAV 1	IF

LOC/DME Z RWY 36L - via KEVOX to AKEVI(If)

Serial Number	Path Descriptor	Waypoint Identifier	Fly-over	Course/Track °M(°T)	Distance (NM)	Turn direction	Altitude (ft)	Speed (kt)	Coordinates	VPA/ TCH	Navigation specification	Remarks
001	-	KEVOX	-	-	-	-	+6 000	-230	35°00'51.7"N 128°43'47.2"E	-	RNAV 1	IAF
002	TF	PK711	-	125.8(118.3)	6.3	-	+5 000	-230	34°57'51.9"N 128°50'32.3"E	-	RNAV 1	SDF
002	TF	AKEVI	-	091.5(084.1)	6.0	-	+3 300	-230	34°58'29.0"N 128°57'48.0"E	-	RNAV 1	IF

LOC/DME Z RWY 36L - via AKEVI(If) to MAHF

Serial Number	Path Descriptor	Waypoint Identifier	Fly-over	Course/Track °M(°T)	Distance (NM)	Turn direction	Altitude (ft)	Speed (kt)	Coordinates	VPA/ TCH	Navigation specification	Remarks
001	TF	AKEVI	-	-	-	-	+3 300	-230	34°58'29.0"N 128°57'48.0"E	-	RNAV 1	IF
002	TF	OLMOG	-	001.4(354.0)	5.1	-	+2 100	-	35°03'32.1"N 128°57'09.1"E	-	LOC	FAF
003	-	D3.8 IKMA	-	001.4(354.0)	2.8	-	+1 200	-	-	-	LOC	SDF
004	-	D0.7 IKMA	-	001.4(354.0)	3.1	-	+400	-	-	-	LOC	MAPt
005	-	RWY 36L	-	001.4(354.0)	0.5	-	-	-	35°09'54.7"N 128°56'19.8"E	3.0/67	LOC	-
006	VA	-	-	001.4(354.0)	-	-	+700	-210	-	-	RNAV 1	CG 360 ft/NM to 6 000 ft
007	DF	OPONO	-	-	-	L	@6 000	-210	35°18'24.2"N 128°43'46.2"E	-	RNAV 1	CG 360 ft/NM to 6 000 ft
008	TF	GAYHA	-	231.2(223.8)	7.0	-	@6 000	-210	35°13'22.4"N 128°37'54.4"E	-	RNAV 1	-
009	TF	KEVOX	-	166.3(158.9)	13.4	-	+6 000	-230	35°00'51.7"N 128°43'47.2"E	-	RNAV 1	-

Change : Amended phrases(coordinates for OPONO, GAYHA, KEVOX).

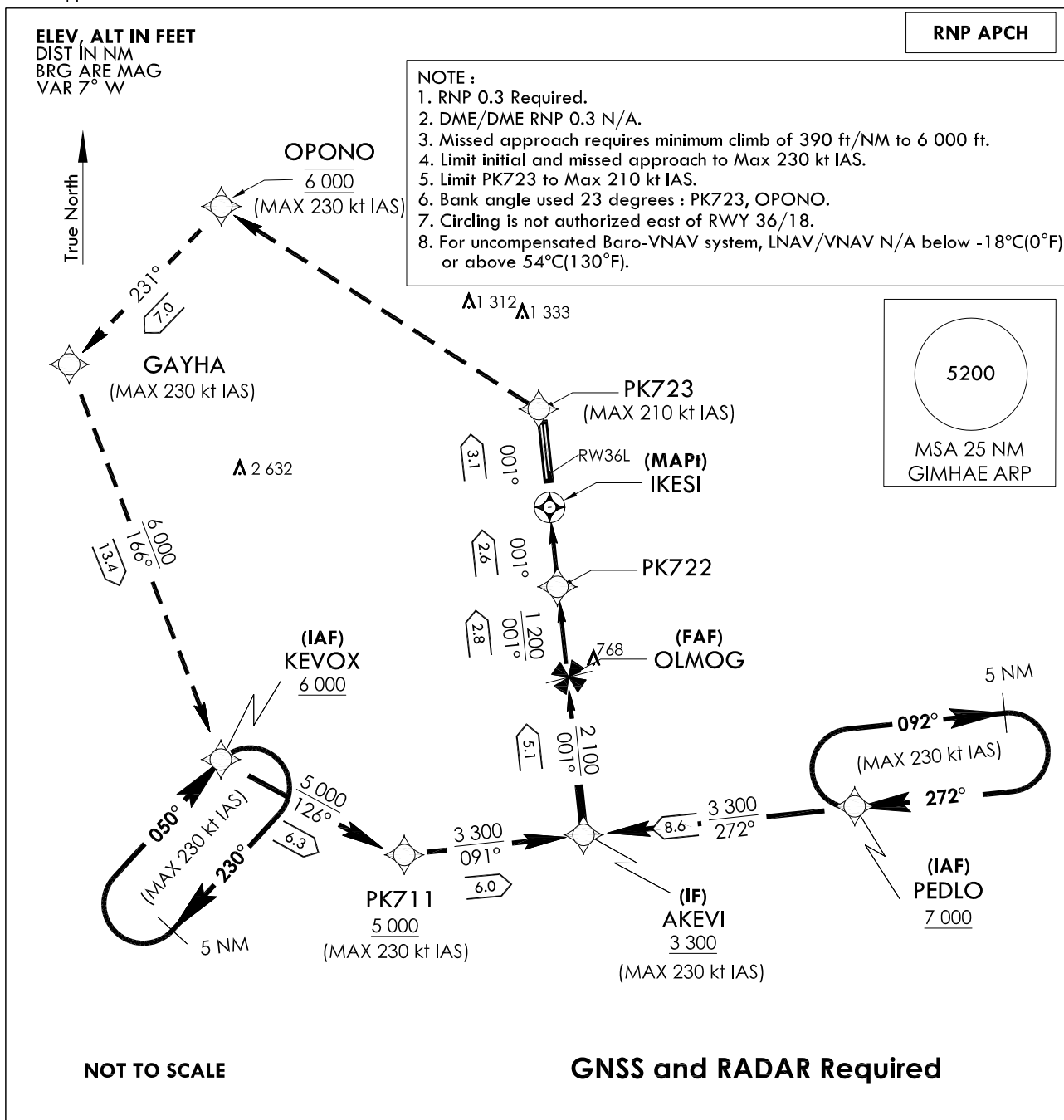
**INSTRUMENT  
APPROACH  
CHART**

**AERODROME ELEV** 13 ft  
**HEIGHTS RELATED TO**  
**THR RWY 36L - ELEV** 12 ft

GIMHAE APP 125.5 364.0  
GIMHAE TWR 118.1 118.45  
233.3 236.6

**BUSAN/Gimhae Intl(RKPK)**  
**RNP RWY 36L**

Note : Approach and circle to land under U.S. TERPS.

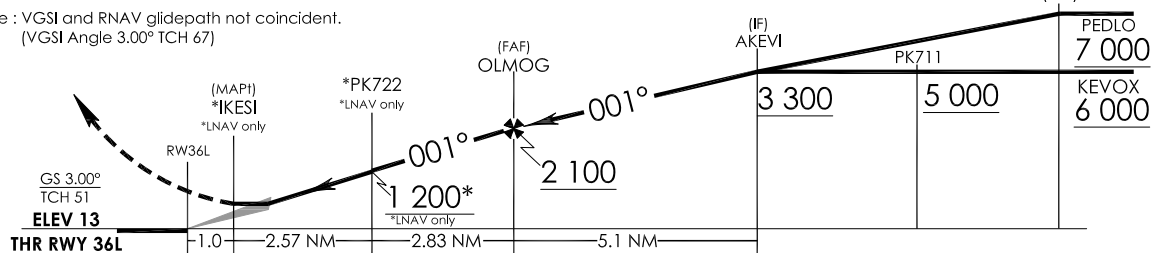


6 000	PK723	OPONO	GAYHA	KEVOX
↑	fr 001°	fr 310°	fr 231°	fr 166°

Note : VGSI and RNAV glidepath not coincident.  
(VGSI Angle 3.00° TCH 67)

TRANSITION	ALT	14 000
TRANSITION	LVL	FL 140

**MISSED APPROACH :**  
Climb to 6 000 ft on track 001° to PK723, then track 310° to cross OPONO at 6 000 ft, then track 231° to GAYHA, then track 166° to KEVOX and hold.



CATEGORY	A	B	C	D
LNAV /VNAV	FULL	420/45	408(500- $\frac{2}{3}$ )	
	ALS INOP	420-1 $\frac{2}{3}$	408(500-1 $\frac{2}{3}$ )	
LNAV	FULL	500/45	488(500- $\frac{2}{3}$ )	500/55 488(500-1)
	ALS INOP	500-1 $\frac{2}{3}$	488(500-1 $\frac{2}{3}$ )	
CIRCLING	580-1 $\frac{1}{2}$	567(600-1 $\frac{1}{2}$ )	1 360-3 1 347(1 400-3)	1 700-3 1 687(1 700-3)

Change : Information of fix names(BETTA → OPONO, ZULBI → KEVOX, DUKDU → OLMOG, THORE → IKESI).

BUSAN/Gimhae INTL(RKPK)  
RNP RWY 36L

## AERONAUTICAL DATA TABULATION

## Instrument Approach Procedure Coding Tables

RNP RWY 36L - via PEDLO to AKEV(IIF)

Serial Number	Path Descriptor	Waypoint Identifier	Course/Track °M(°T)	Distance (NM)	Turn direction	Altitude (ft)	Speed (kt)	Coordinates	VPA/TCH	Navigation specification	Remarks
001	-	PEDLO	-	-	-	+7 000	-230	34°59'23.1"N 129°08'15.3"E	-	RNP APCH	IAF
002	TF	AKEVI	-	8.6	-	+3 300	-230	34°58'29.0"N 128°57'48.0"E	-	RNP APCH	IF

RNP RWY 36L - via KEVOX to AKEV(IIF)

Serial Number	Path Descriptor	Waypoint Identifier	Course/Track °M(°T)	Distance (NM)	Turn direction	Altitude (ft)	Speed (kt)	Coordinates	VPA/TCH	Navigation specification	Remarks
001	-	KEVOX	-	-	-	+6 000	-230	35°00'51.7"N 128°43'47.2"E	-	RNP APCH	IAF
002	TF	PK711	-	6.3	-	+5 000	-230	34°57'51.9"N 128°50'32.3"E	-	RNP APCH	SDF
002	TF	AKEVI	-	6.0	-	+3 300	-230	34°58'29.0"N 128°57'48.0"E	-	RNP APCH	IF

RNP RWY 36L - via AKEV(IIF) to MAHF

Serial Number	Path Descriptor	Waypoint Identifier	Course/Track °M(°T)	Distance (NM)	Turn direction	Altitude (ft)	Speed (kt)	Coordinates	VPA/TCH	Navigation specification	Remarks
001	TF	AKEVI	-	-	-	+3 300	-230	34°58'29.0"N 128°57'48.0"E	-	RNP APCH	IF
002	TF	OLMOG	-	5.1	-	+2 100	-	35°03'32.1"N 128°57'09.1"E	-	RNP APCH	FAF
003	TF	PK722	-	2.83	-	+1 200	-	35°06'21.1"N 128°56'47.3"E	-	RNP APCH	SDF
004	TF	IKESI	Y	2.57	-	+500	-	35°08'54.9"N 128°56'27.5"E	-	RNP APCH	MAPI
005	TF	PK723	-	3.08	-	-	-210	35°11'59.2"N 128°56'03.7"E	-	RNP APCH	CG 390 ft/NM to 6 000
006	TF	OPONO	-	11.9	-	-	-230	35°18'24.2"N 128°43'46.2"E	-	RNP APCH	CG 390 ft/NM to 6 000
007	TF	GAYHA	-	7.0	-	-	-230	35°13'22.4"N 128°37'54.4"E	-	RNP APCH	-
008	TF	KEVOX	-	13.4	-	+6 000	-230	35°00'51.7"N 128°43'47.2"E	-	RNP APCH	-
009	HM	PEDLO	-	5.0	R	-8 000 +7 000	-230	34°59'23.1"N 129°08'15.3"E	-	-	-
010	HM	KEVOX	-	5.0	R	-10 000 +6 000	-230	35°00'51.7"N 128°43'47.2"E	-	-	-

Change : Information of fix names(BETTA → OPONO, ZULBI → KEVOX, DUKDU → OLMOG, THORE → IKESI).

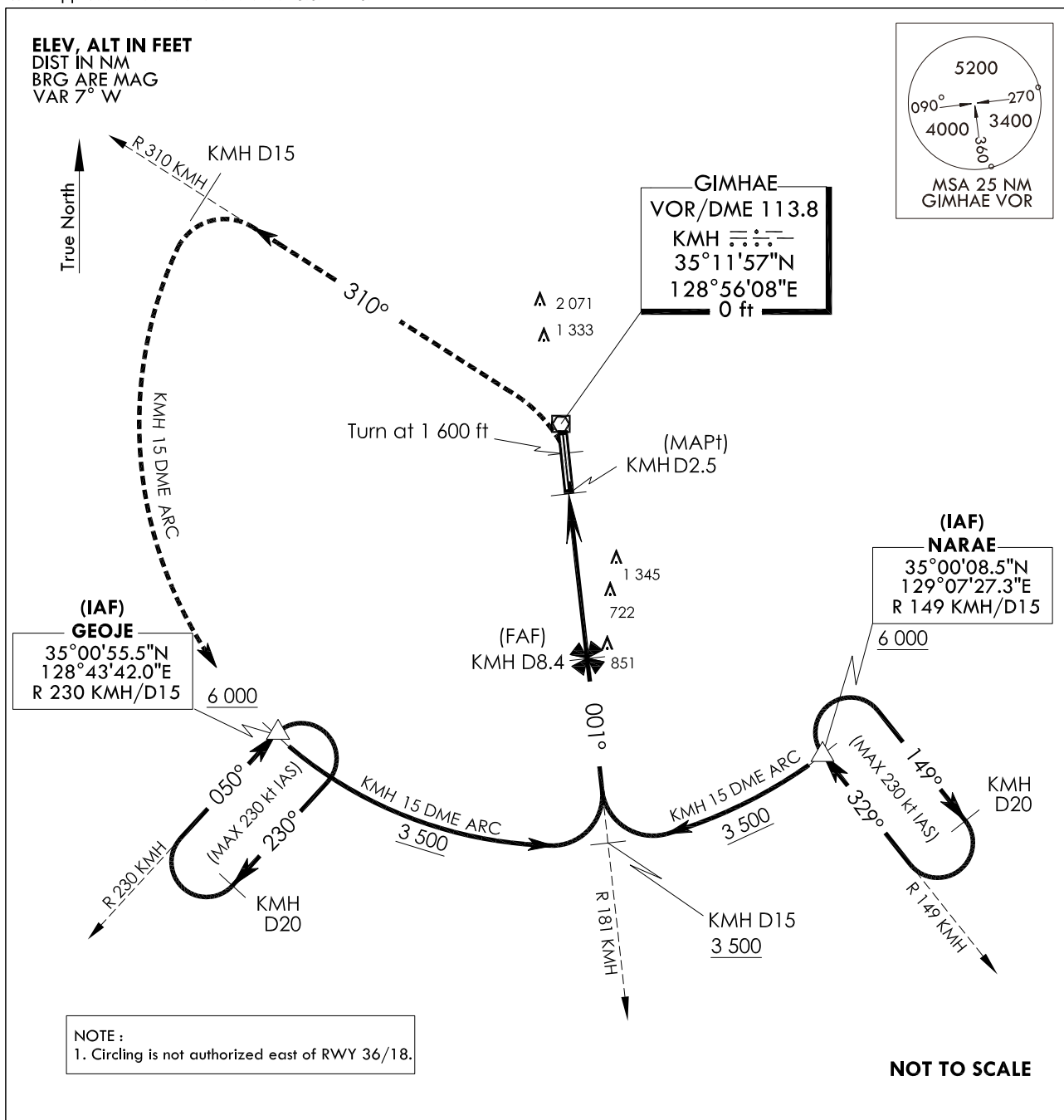
**INSTRUMENT  
APPROACH  
CHART**

**AERODROME ELEV 13 ft**  
HEIGHTS RELATED TO  
THR RWY 36L - ELEV 12 ft

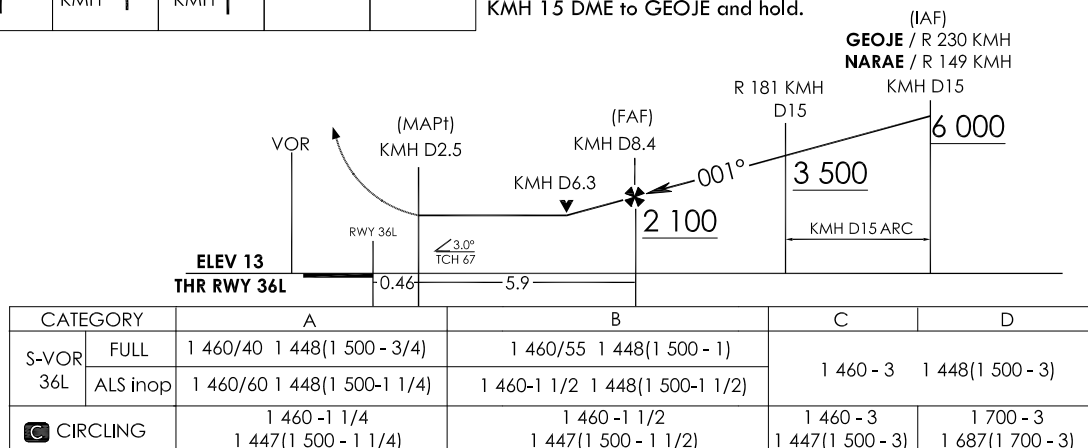
GIMHAE APP 125.5 364.0  
GIMHAE TWR 118.1 118.45  
233.3 236.6

**BUSAN/Gimhae Intl(RKPK)**  
**VOR/DME**  
**RWY 36L**

Note : Approach and circle to land under U.S. TERPS.



1 600	6 000	KMH D15	KMH D15	GEOJE	<b>MISSED APPROACH :</b> Climb to 1 600 ft then left turn climbing 6 000 ft on R 310 KM/D15 to 15 DME, then ARC KM/D15 to GEOJE and hold.	TRANSITION ALT 14 000 TRANSITION LVL FL 140
-------	-------	---------	---------	-------	----------------------------------------------------------------------------------------------------------------------------------------------------	------------------------------------------------



Change : Information of RWY ELEV format.

**INTENTIONALLY**

**LEFT**

**BLANK**

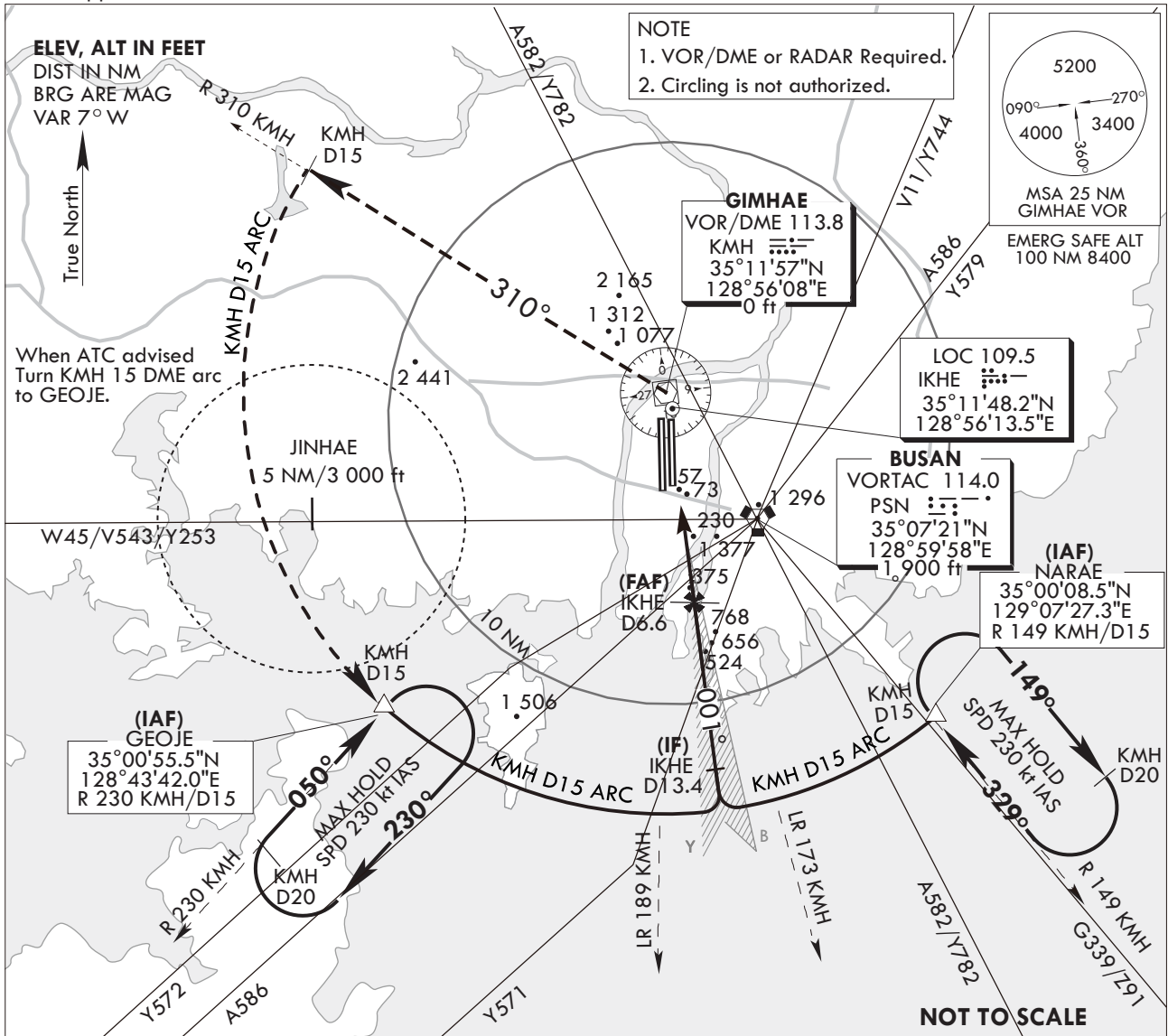
**INSTRUMENT  
APPROACH  
CHART**

**AERODROME ELEV 13 ft**  
HEIGHTS RELATED TO  
RWY 36R ELEV TDZ 8 ft

GIMHAE APP	125.5	364.0
GIMHAE TWR	118.1	118.450
	233.3	236.6

**BUSAN/Gimhae Intl(RKPK)**  
**ILS Y**  
**RWY 36R**

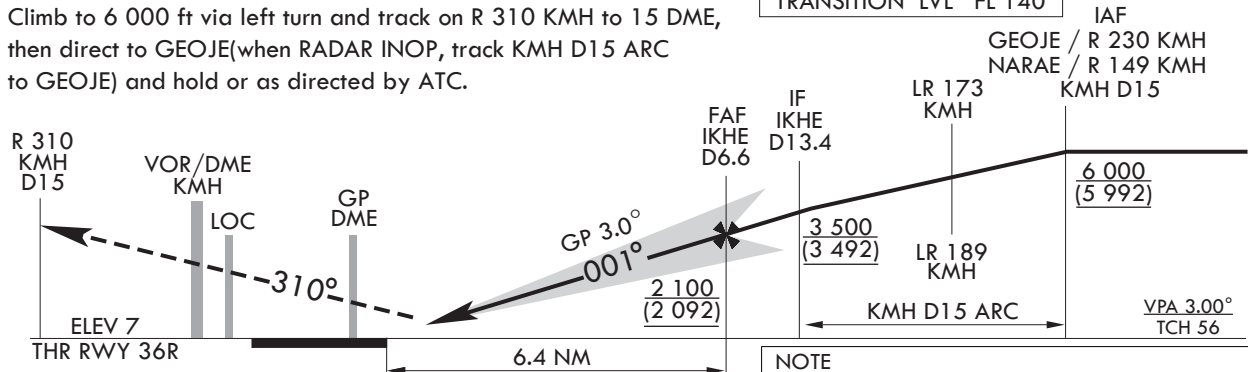
Note : Approach and circle to land under U.S. TERPS.



**MISSED APPROACH**

Climb to 6 000 ft via left turn and track on R 310 KMH to 15 DME,  
then direct to GEOJE (when RADAR INOP, track KMH D15 ARC  
to GEOJE) and hold or as directed by ATC.

TRANSITION ALT 14 000  
TRANSITION LVL FL 140



- NOTE
1. Use IKHE DME when on the localizer course.
  2. VGSI and ILS glidepath not coincident. (VGSI Angle 3.00° TCH 75)
  3. Missed approach requires minimum climb of 400 ft/NM to 6 000 ft.

MISSED APPROACH minimum climb rate

KNOTS	60	120	180	240	300	TO
V/V (fpm)	400	800	1 200	1 600	2 000	6 000

CATEGORY	A	B	C	D
S-ILS/DME 36R	<b>208/18</b> 200 (200-1/2)		<b>208/24*</b> 200 (200-1/2) *Use civil only RVR 18	
	When TDZ/CL LGT INOP, increase RVR to 24			
ALS INOP	<b>208/40</b> 200 (200-3/4)			

Change : Withdrawal of Y579 and Establishment of Y571/Y572.

**INTENTIONALLY**

**LEFT**

**BLANK**

GIMHAE	APP	125.5	364.0
GIMHAE	TWR	118.1	118.450
		233.3	236.6

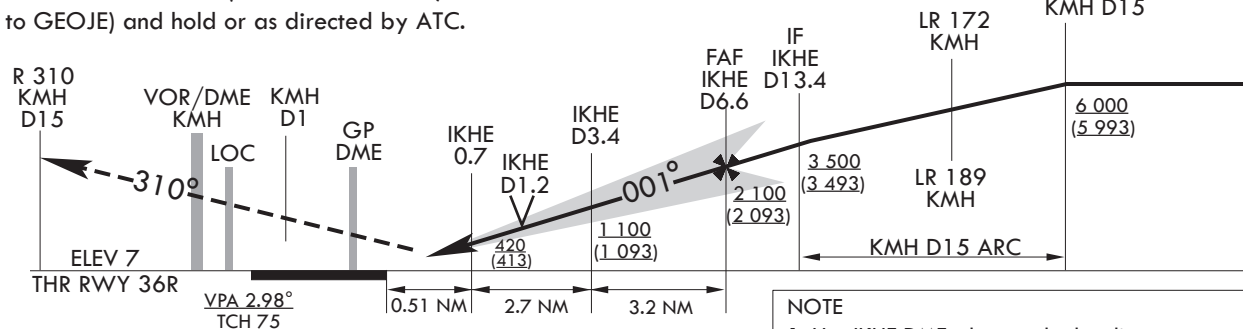
**BUSAN/Gimhae Intl(RKPK)**  
**LOC/DME Y**  
**RWY 36R**

NOTE : VOR/DME or RADAR Required.



TRANSITION	ALT	14 000
TRANSITION	LVL	FL 140

IAF  
GEOJE / R 230 KMH  
NARAE / R 149 KMH  
KMH D15



1. Use IKHE DME when on the localizer course.
2. Circling not authorized East of RWY 18L/36R.
3. Missed approach requires minimum climb of 350 ft/NM to 6 000 ft.

CATEGORY	A	B	C	D
S-LOC/DME 36R	<b>420/24</b> 413 (500-1/2)		<b>420/40</b> 413 (500-3/4)	
ALS INOP	<b>420/55</b> 413(500-1)		<b>420/60</b> 413(500-11/8)	
CIRCLING <b>C</b>	<b>520-1</b> 507(600-1)	<b>580-1</b> 567(600-1)	<b>1 360-3</b> 1 347(1 400-3)	<b>1 700-3</b> 1 687(1 700-3)

KNOTS	60	120	180	240	300	TO
V/V (fpm)	350	700	1 050	1 400	1 750	6 000

AIP AMDT 3/23

**INTENTIONALLY**

**LEFT**

**BLANK**

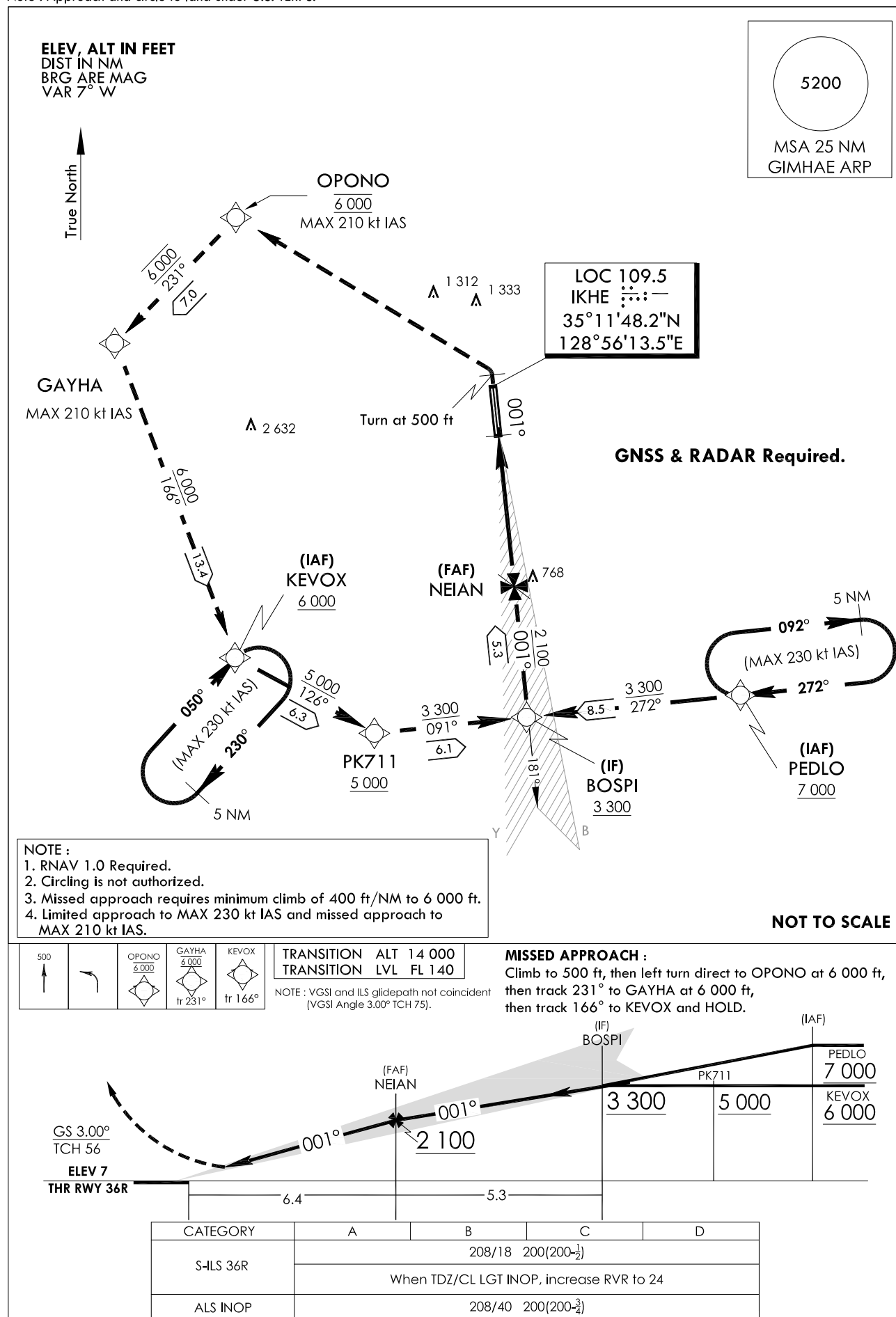
**INSTRUMENT  
APPROACH  
CHART**

**AERODROME ELEV 13 ft**  
HEIGHTS RELATED TO  
RWY 36R ELEV TDZ 8 ft

GIMHAE APP	125.5	364.0
GIMHAE TWR	118.1	118.45
	233.3	236.6

**BUSAN/Gimhae Intl(RKPK)**  
**ILS Z**  
**RWY 36R**

Note : Approach and circle to land under U.S. TERPS.



Change : Information of fix names(BETTA → OPOONO, ZULBI → KEVOX).

## BUSAN/Gimhae INTL(RKPK)

ILS Z

RWY 36R

## AERONAUTICAL DATA TABULATION

## Instrument Approach Procedure Coding Tables

ILS Z Approach to RWY 36R from PEDLO to BOSPI(IF)

Serial Number	Path Descriptor	Waypoint Identifier	Fly-over	Course/Track °M(°T)	Distance (NM)	Turn direction	Altitude (ft)	Speed (kt)	Coordinates	VPA/TCH	Navigation specification	Remarks
001	-	PEDLO	-	-	-	-	+7 000	-230	34°59'23.1"N 129°08'15.3"E	-	RNAV 1	IAF
002	TF	BOSPI	-	271.7(264.2)	8.5	-	+3 300	-230	34°58'31.2"N 128°57'56.1"E	-	RNAV 1	IF

ILS Z Approach to RWY 36R from KEVOX to BOSPI(IF)

Serial Number	Path Descriptor	Waypoint Identifier	Fly-over	Course/Track °M(°T)	Distance (NM)	Turn direction	Altitude (ft)	Speed (kt)	Coordinates	VPA/TCH	Navigation specification	Remarks
001	-	KEVOX	-	-	-	-	+6 000	-230	35°00'51.7"N 128°43'47.2"E	-	RNAV 1	IAF
002	TF	PK711	-	125.8(118.3)	6.3	-	+5 000	-230	34°57'51.9"N 128°50'32.3"E	-	RNAV 1	SDF
002	TF	BOSPI	-	091.3(083.8)	6.1	-	+3 300	-230	34°58'31.2"N 128°57'56.1"E	-	RNAV 1	IAF/IF

ILS Z Approach to RWY 36R from BOSPI(IF) to MAHF

Serial Number	Path Descriptor	Waypoint Identifier	Fly-over	Course/Track °M(°T)	Distance (NM)	Turn direction	Altitude (ft)	Speed (kt)	Coordinates	VPA/TCH	Navigation specification	Remarks
001	TF	BOSPI	-	-	-	-	+3 300	-230	34°58'31.2"N 128°57'56.1"E	-	RNAV 1	IF
002	TF	NEIAN	-	001.4(354.0)	5.3	-	+2 100	-	35°03'46.6"N 128°57'15.5"E	-	-	FAF
003	-	DA	-	001.4(354.0)	-	-	+208	-	-	-	LOC	DA
004	-	RWY 36R	-	001.4(354.0)	-	-	-	-	35°10'10.10"N 128°56'26.14"E	3.0/56	LOC	-
005	DF	OPONO	-	-	-	L	@6 000	-210	35°18'24.2"N 128°43'46.2"E	-	RNAV 1	CG 400 ft/NM to 6 000
006	TF	GAYHA	-	231.3(223.8)	7.0	-	@6 000	-210	35°13'22.4"N 128°37'54.4"E	-	RNAV 1	-
007	TF	KEVOX	-	166.3(158.9)	13.4	-	+6 000	-230	35°00'51.7"N 128°43'47.2"E	-	RNAV 1	-
008	HM	PEDLO	-	271.7(264.2)	5.0	R	-8 000 +7 000	-230	34°59'23.1"N 129°08'15.3"E	-	-	-
009	HM	KEVOX	-	050(042.5)	5.0	R	-10 000 +6 000	-230	35°00'51.7"N 128°43'47.2"E	-	-	-

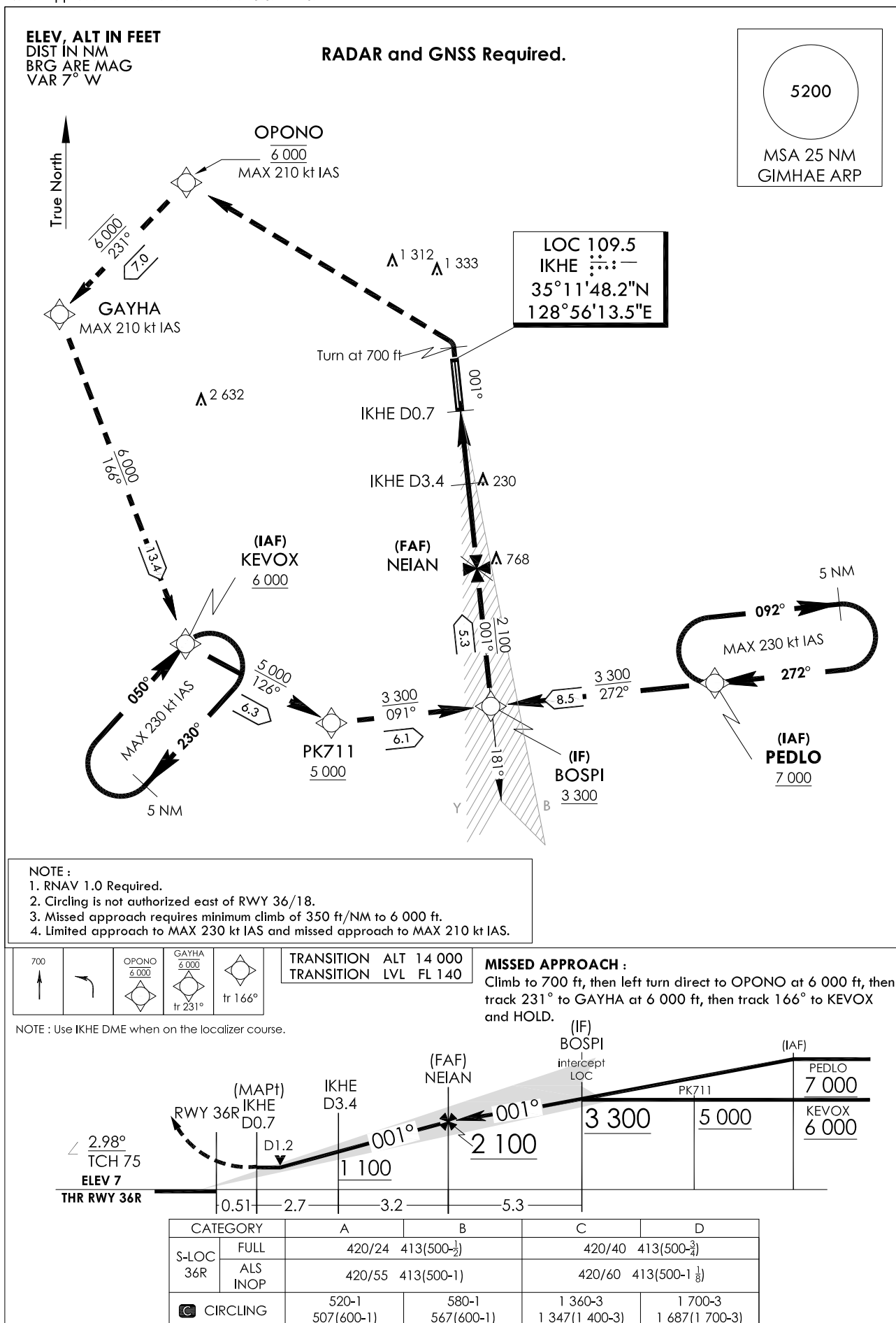
Change : Information of fix names(BETTA → OPONO, ZULBI → KEVOX).

**AERODROME ELEV 13 ft**  
**HEIGHTS RELATED TO**  
**THR RWY 36R - ELEV 7 ft**

GIMHAE	APP	125.5	364.0
GIMHAE	TWR	118.1	118.45
		233.3	236.6

**BUSAN/Gimhae Intl(RKPK)**  
**LOC/DME Z**  
**RWY 36R**

Note : Approach and circle to land under U.S. TERPS.



Change : Information of fix names(BETTA → OPONO, ZULBI → KEVOX).

BUSAN/Gimhae INTL(RKPK)

LOC/DME Z

RWY 36R

## AERONAUTICAL DATA TABULATION

## Instrument Approach Procedure Coding Tables

LOC/DME Z Approach to RWY 36R from PEDLO to BOSPI(IF)

Serial Number	Path Descriptor	Waypoint Identifier	Fly-over	Course/Track °M(T)	Distance (NM)	Turn direction	Altitude (ft)	Speed (kt)	Coordinates	VPA/TCH	Navigation specification	Remarks
001	-	PEDLO	-	-	-	-	+7 000	-230	34°59'23.1"N 129°08'15.3"E	-	RNAV 1	IAF
002	TF	BOSPI	-	271.7(264.2)	8.5	-	+3 300	-230	34°58'31.2"N 128°57'56.1"E	-	RNAV 1	IF

LOC/DME Z Approach to RWY 36R from KEVOX to BOSPI(IF)

Serial Number	Path Descriptor	Waypoint Identifier	Fly-over	Course/Track °M(T)	Distance (NM)	Turn direction	Altitude (ft)	Speed (kt)	Coordinates	VPA/TCH	Navigation specification	Remarks
001	-	KEVOX	-	-	-	-	+6 000	-230	35°00'51.7"N 128°43'47.2"E	-	RNAV 1	IAF
002	TF	PK711	-	125.8(118.3)	6.3	-	+5 000	-230	34°57'51.9"N 128°50'32.3"E	-	RNAV 1	SDF
002	TF	BOSPI	-	091.3(083.8)	6.1	-	+3 300	-230	34°58'31.2"N 128°57'56.1"E	-	RNAV 1	IF

LOC/DME Z Approach to RWY 36R from BOSPI(IF) to MAHF

Serial Number	Path Descriptor	Waypoint Identifier	Fly-over	Course/Track °M(T)	Distance (NM)	Turn direction	Altitude (ft)	Speed (kt)	Coordinates	VPA/TCH	Navigation specification	Remarks
001	TF	BOSPI	-	-	-	-	+3 300	-230	34°58'31.2"N 128°57'56.1"E	-	RNAV 1	IF
002	TF	NEIAN	-	001.4(354.0)	5.3	-	+2 100	-	35°03'46.6"N 128°57'15.5"E	-	LOC	FAF
003	-	IKHE 3.4D	-	001.4(354.0)	3.2	-	+1 100	-	35°06'57.8"N 128°56'50.9"E	-	LOC	SDF
004	-	IKHE 0.7D	-	001.4(354.0)	2.7	-	+420	-	35°09'39.4"N 128°56'30.1"E	-	LOC	MAPI
005	-	RWY 36R	-	001.4(354.0)	0.51	-	-	-	35°10'10.10"N 128°56'26.14"E	3.0/56	LOC	-
006	DF	OPONO	-	-	-	L	@6 000	-210	35°18'24.2"N 128°43'46.2"E	-	RNAV 1	CG 350 ft/NM to 6 000
007	TF	GAYHA	-	231.3(223.8)	7.0	-	@6 000	-210	35°13'22.4"N 128°37'54.4"E	-	RNAV 1	-
008	TF	KEVOX	-	166.3(158.9)	13.4	-	+6 000	-230	35°00'51.7"N 128°43'47.2"E	-	RNAV 1	-
009	HM	PEDLO	-	271.7(264.2)	5.0	R	-8 000 +7 000	-230	34°59'23.1"N 129°08'15.3"E	-	-	-
010	HM	KEVOX	-	050(042.5)	5.0	R	-10 000 +6 000	-230	35°00'51.7"N 128°43'47.2"E	-	-	-

Change : Information of fix names(BETTA → OPONO, ZULBI → KEVOX).

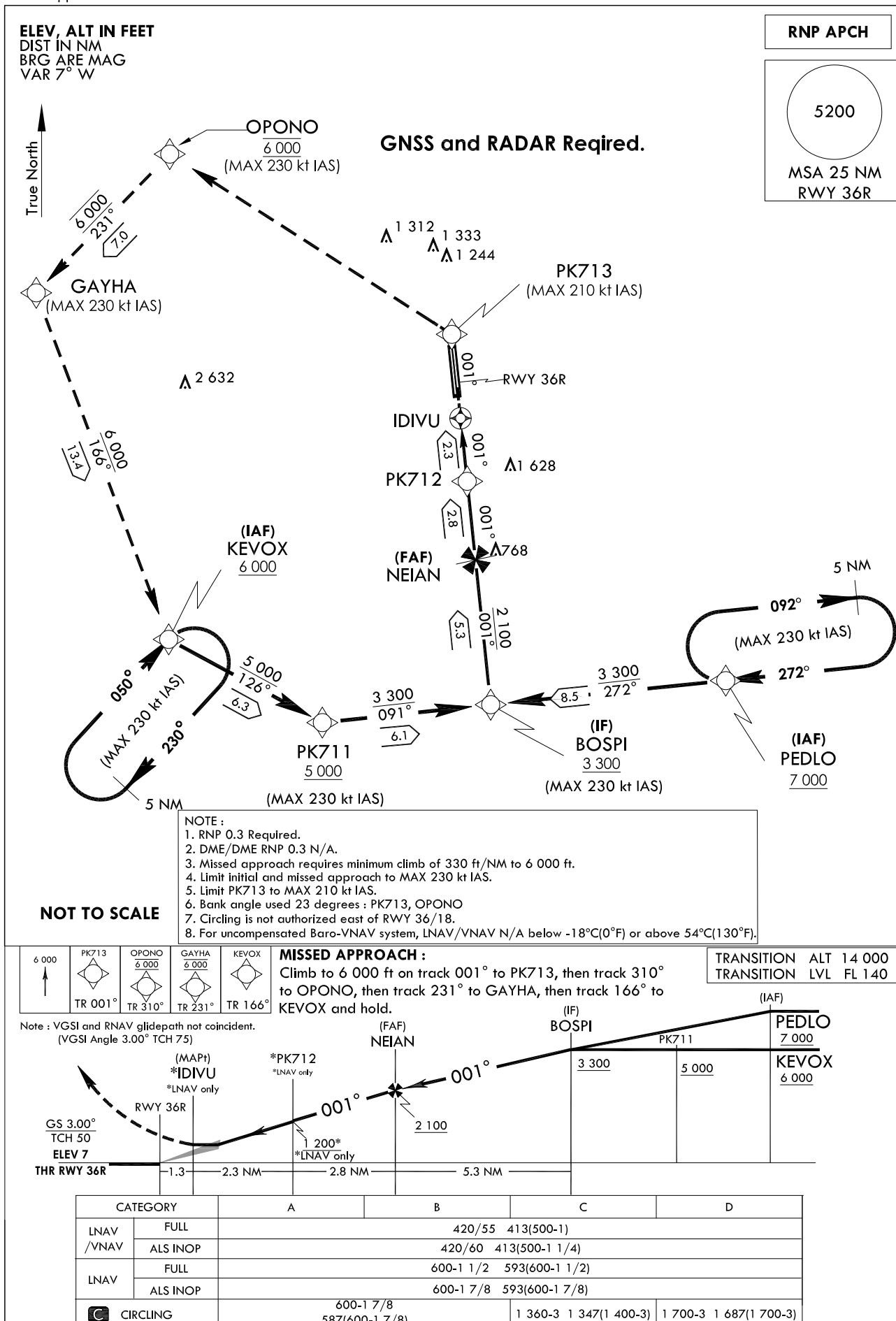
**INSTRUMENT  
APPROACH  
CHART**

**AERODROME ELEV 13 ft**  
**HEIGHTS RELATED TO**  
**THR RWY 36R - ELEV 7 ft**

GIMHAE APP 125.5 364.0  
GIMHAE TWR 118.1 118.45  
233.3 236.6

**BUSAN/Gimhae Intl(RKPK)**  
**RNP RWY 36R**

Note : Approach and circle to land under U.S. TERPS.



Change : Page control.

## AERONAUTICAL DATA TABULATION

## Instrument Approach Procedure Coding Tables

## RNP RWY 36R - via PEDLO to BOSPI(IF)

Serial Number	Path Descriptor	Waypoint Identifier	Course/Track over °M(T)	Distance (NM)	Turn direction	Altitude (ft)	Speed (kt)	Coordinates	VPA/TCH	Navigation specification	Remarks
001	-	PEDLO	-	-	-	+7 000	-230	34°59'23.1"N 129°08'15.3"E	-	RNP APCH	IAF
002	TF	BOSPI	-	271.7(264.2)	8.5	+3 300	-230	34°58'31.2"N 128°57'56.1"E	-	RNP APCH	IF

## RNP RWY 36R - via KEVOX to BOSPI(IF)

Serial Number	Path Descriptor	Waypoint Identifier	Course/Track over °M(T)	Distance (NM)	Turn direction	Altitude (ft)	Speed (kt)	Coordinates	VPA/TCH	Navigation specification	Remarks
001	-	KEVOX	-	-	-	+6 000	-230	35°00'51.7"N 128°43'47.2"E	-	RNP APCH	IAF
002	TF	PK711	-	125.8(118.3)	6.3	+5 000	-230	34°57'51.9"N 128°50'32.3"E	-	RNP APCH	SDF
002	TF	BOSPI	-	091.3(083.8)	6.1	+3 300	-230	34°58'31.2"N 128°57'56.1"E	-	RNP APCH	IF

## RNP RWY 36R - via BOSPI(IF) to MAHF

Serial Number	Path Descriptor	Waypoint Identifier	Course/Track over °M(T)	Distance (NM)	Turn direction	Altitude (ft)	Speed (kt)	Coordinates	VPA/TCH	Navigation specification	Remarks
001	TF	BOSPI	-	-	-	+3 300	-230	34°58'31.2"N 128°57'56.1"E	-	RNP APCH	IF
002	TF	NEIAN	-	001.4(354.0)	5.3	+2 100	-	35°03'46.6"N 128°57'15.5"E	-	RNP APCH	FAF
003	TF	PK712	-	001.4(354.0)	2.8	+1 200	-	35°06'35.6"N 128°56'53.8"E	-	RNP APCH	SDF
004	TF	IDIVU	Y	001.4(354.0)	2.3	+600	-	35°08'52.4"N 128°56'36.2"E	-	RNP APCH	MAPI
005	TF	PK713	-	001.4(354.0)	3.1	-	-210	35°11'54.5"N 128°56'12.8"E	-	RNP APCH	CG 330 ft/NM to 6 000 ft
006	TF	OPONO	-	310.0(302.5)	12.1	-	-230	35°18'24.2"N 128°43'46.2"E	-	RNP APCH	CG 330 ft/NM to 6 000 ft
007	TF	GAYHA	-	231.2(223.8)	7.0	-	-230	35°13'22.4"N 128°37'54.4"E	-	RNP APCH	CG 330 ft/NM to 6 000 ft
008	TF	KEVOX	-	166.3(158.9)	13.4	+6 000	-230	35°00'51.7"N 128°43'47.2"E	-	RNP APCH	-
009	HM	PEDLO	-	271.7(264.2)	5.0	-8 000 +7 000	-230	34°59'23.1"N 129°08'15.3"E	-	-	-
010	HM	KEVOX	-	050(042.5)	5.0	-10 000 +6 000	-230	35°00'51.7"N 128°43'47.2"E	-	-	-

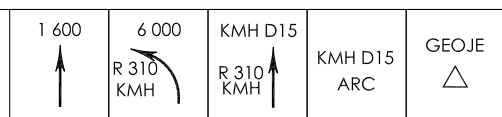
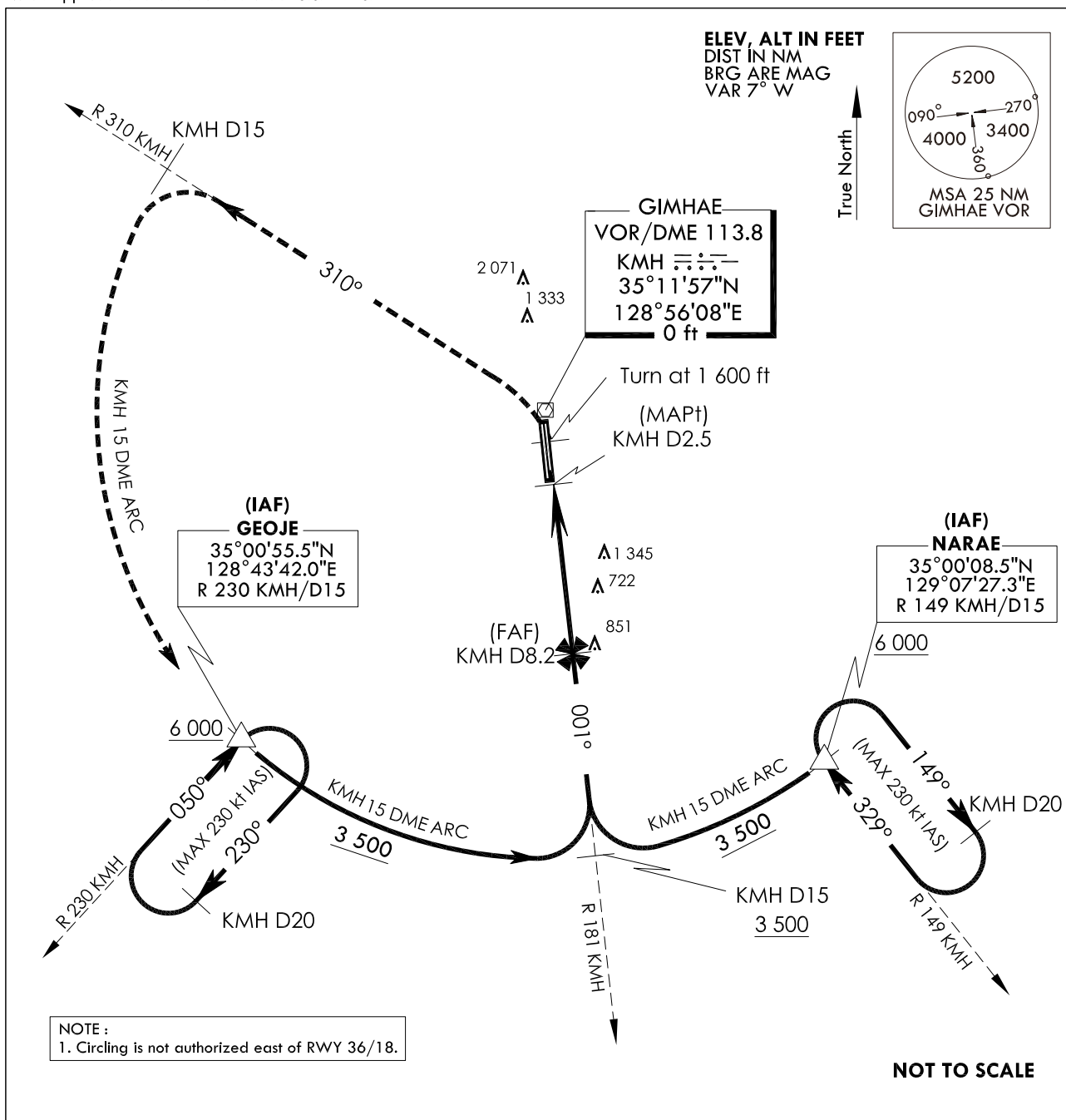
**INSTRUMENT  
APPROACH  
CHART**

**AERODROME ELEV 13 ft**  
HEIGHTS RELATED TO  
THR RWY 36R - ELEV 7 ft

GIMHAE APP 125.5 364.0  
GIMHAE TWR 118.1 118.45  
233.3 236.6

**BUSAN/Gimhae Intl(RKPK)**  
**VOR/DME**  
**RWY 36R**

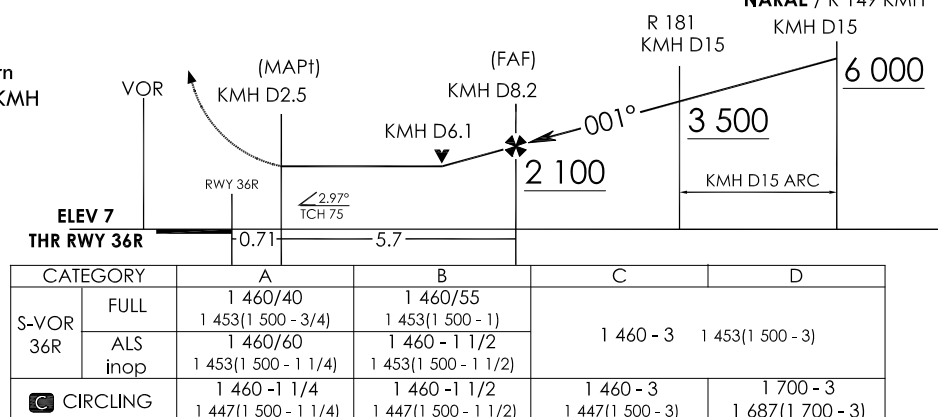
Note : Approach and circle to land under U.S. TERPS.



TRANSITION ALT 14 000  
TRANSITION LVL FL 140

**MISSED APPROACH :**

Climb to 1 600 ft then left turn  
climbing 6 000 ft on R 310 KM/D15  
to 15 DME, then arc KMH 15  
DME to GEOJE and hold.



Change : Information of RWY ELEV format.

**INTENTIONALLY**

**LEFT**

**BLANK**

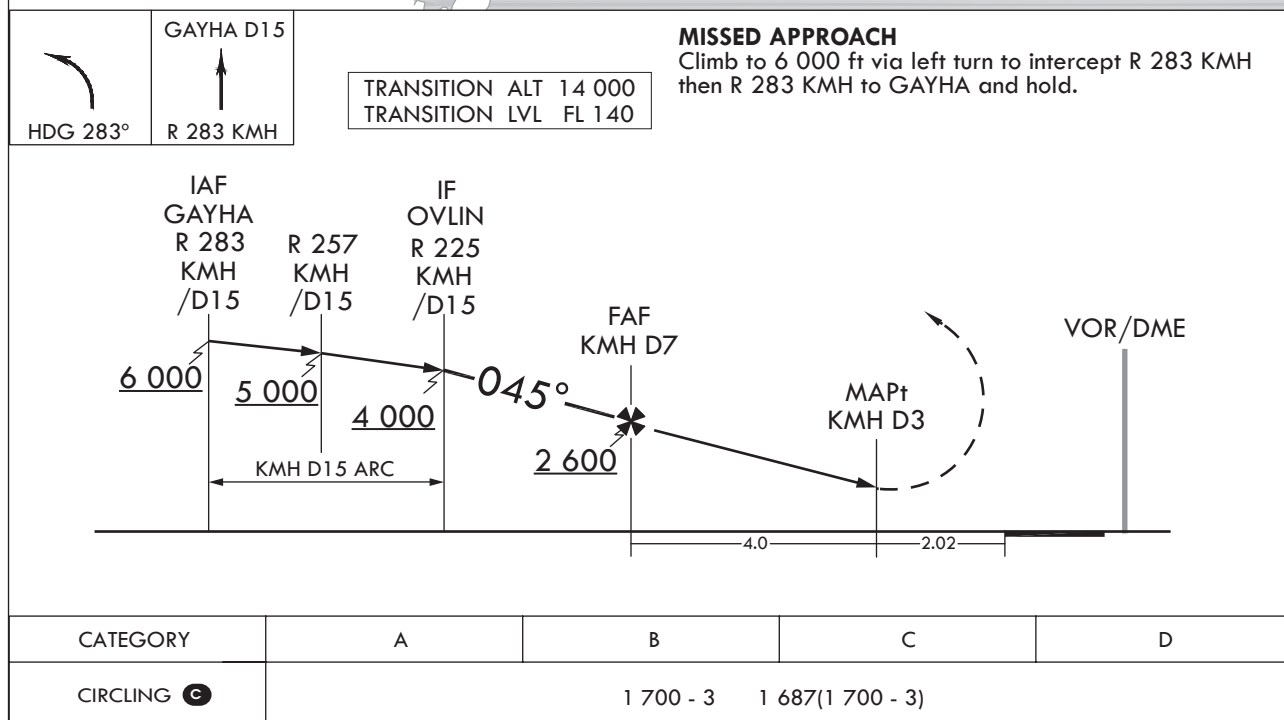
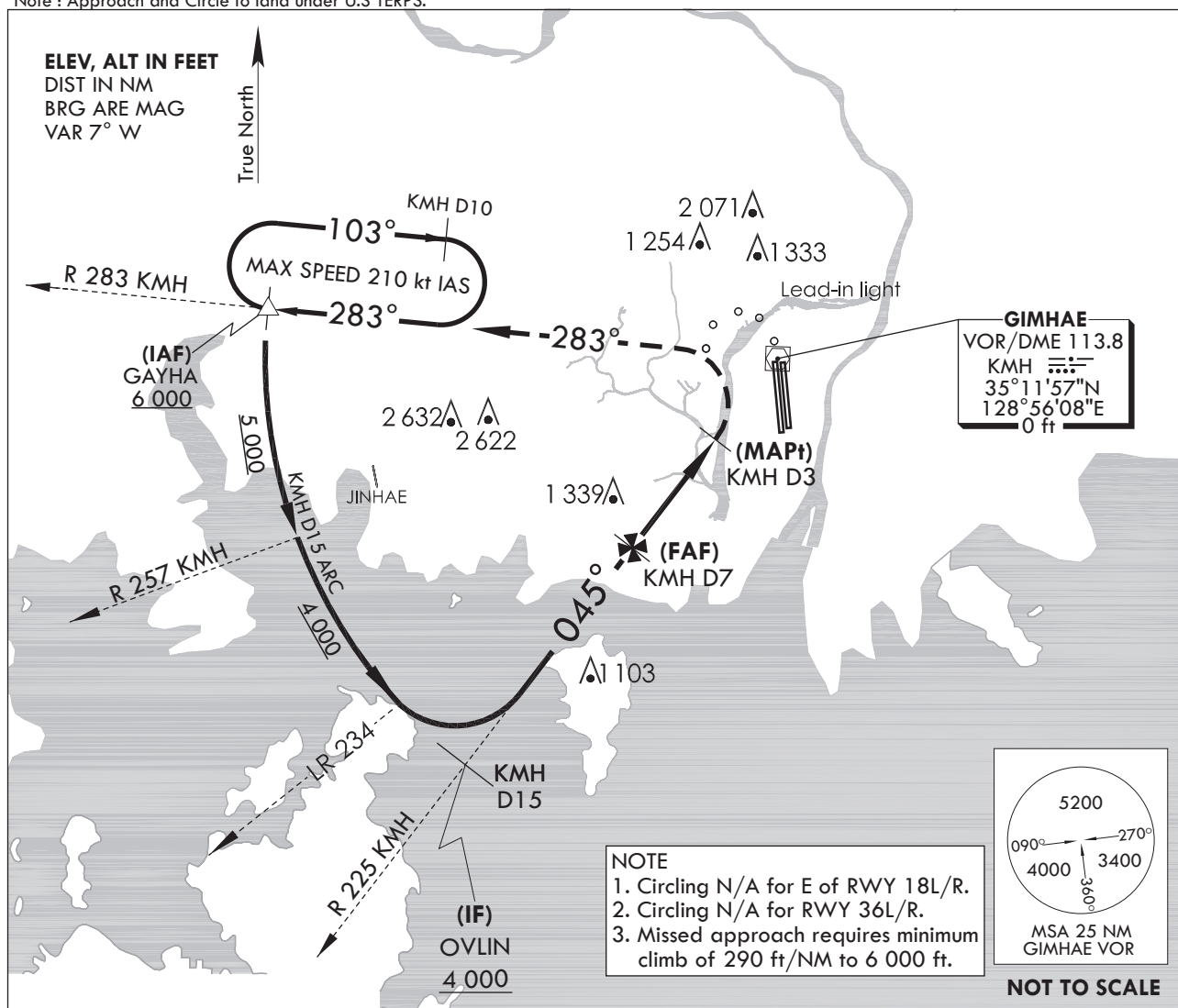
**INSTRUMENT  
APPROACH  
CHART**

**AERODROME ELEV 13 ft**  
HEIGHTS RELATED TO  
THR RWY 18L - ELEV 8 ft  
THR RWY 18R - ELEV 13 ft

GIMHAE APP 125.5 364.0  
GIMHAE TWR 118.1 233.3  
118.450 236.6

**BUSAN/Gimhae INTL(RKPK)**  
**VOR/DME - A**  
**RWY 18L/R**

Note : Approach and Circle to land under U.S TERPS.



Change : Information of ALT restriction for OVLIN.

**INTENTIONALLY**

**LEFT**

**BLANK**

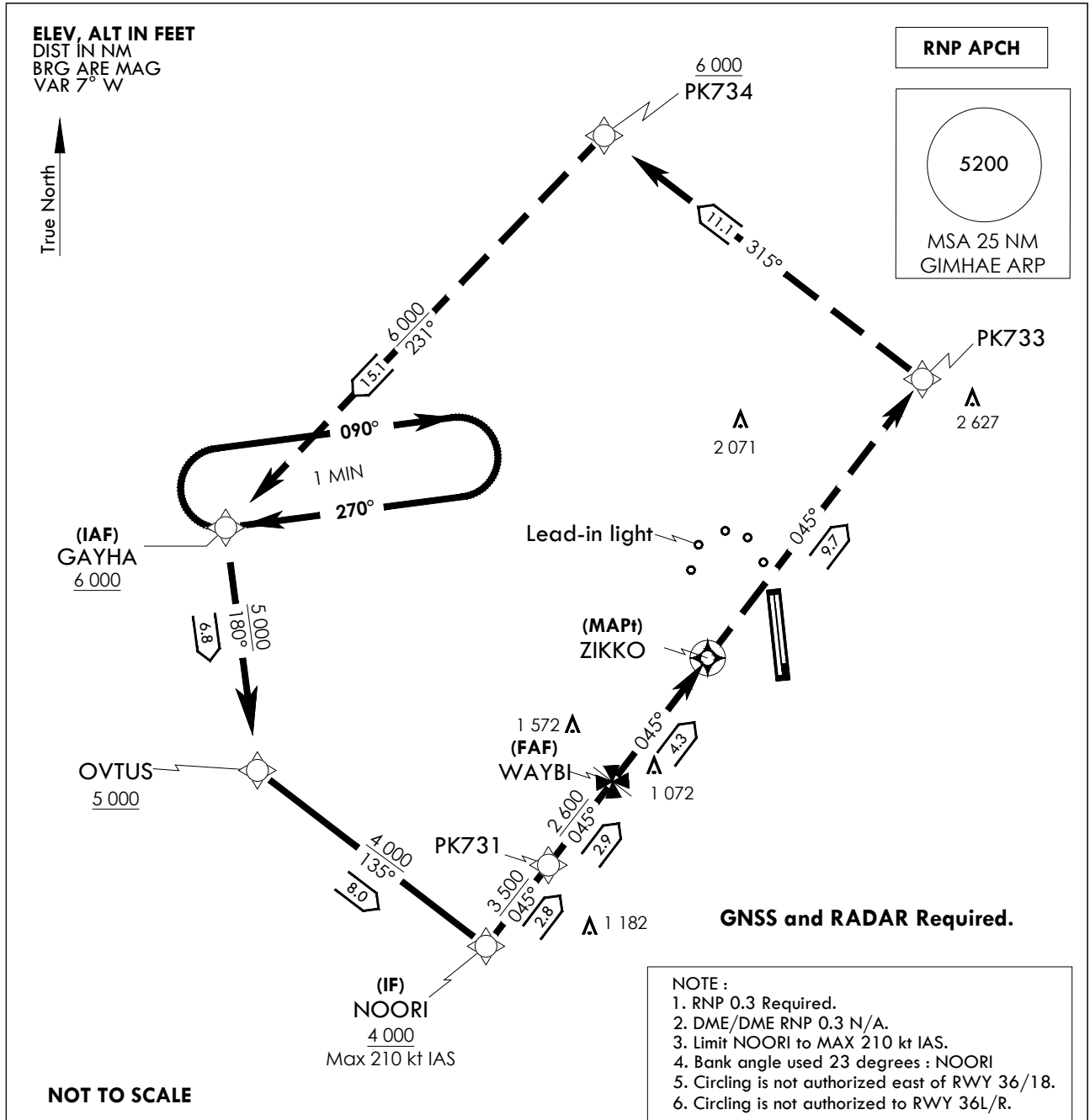
**INSTRUMENT  
APPROACH  
CHART**

**AERODROME ELEV 13 ft**

GIMHAE APP 125.5 364.0  
GIMHAE TWR 118.1 118.45  
233.3 236.6

**BUSAN/Gimhae Intl(RKPK)**  
**RNP B RWY 18L/R**

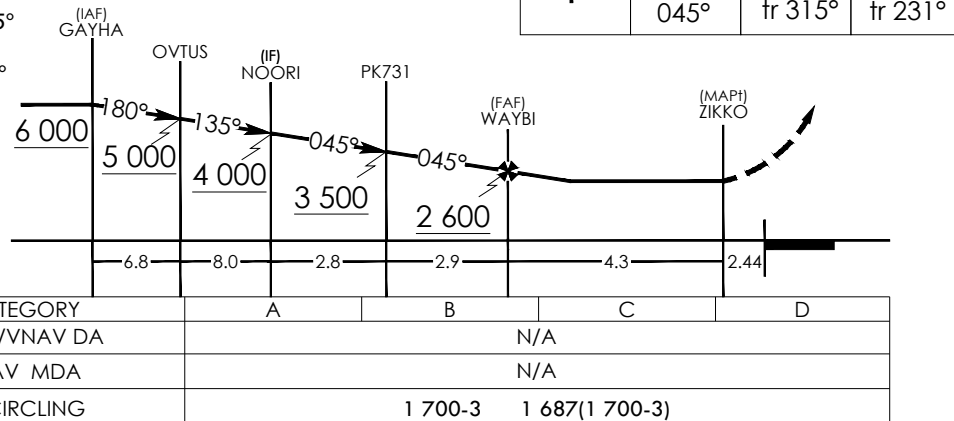
Note : Approach and circle to land under U.S. TERPS.



TRANSITION ALT 14 000  
TRANSITION LVL FL 140

**MISSED APPROACH :**

Climb to 6 000 ft via track 045°  
to PK733 and track  
315° to PK734, then track 231°  
to GAYHA and hold.



Change : Information of fix name(GAZEL → OVTUS).

BUSAN/Gimhae INTL(RKPK)  
RNP B RWY 18L/R

## AERONAUTICAL DATA TABULATION

## Instrument Approach Procedure Coding Tables

RNP B RWY 18L/R

Serial Number	Path Descriptor	Waypoint Identifier	Fly-over	Course/Track °M(°T)	Distance (NM)	Turn direction	Altitude (ft)	Speed (kt)	Coordinates	VPA/ TCH	Navigation specification	Remarks
001	TF	GAYHA	-	-	-	-	+6 000	-	35°13'22.4"N 128°37'54.4"E	-	RNP APCH	IAF
002	TF	OVTUS	-	179.8(172.36)	6.75	-	+5 000	-	35°06'40.3"N 128°39'00.0"E	-	RNP APCH	-
003	TF	NOORI	-	134.8(127.37)	7.95	-	+4 000	-210	35°01'50.0"N 128°46'41.8"E	-	RNP APCH	IF
004	TF	PK731	-	044.9(037.44)	2.82	-	+3 500	-	35°04'04.7"N 128°48'47.2"E	-	RNP APCH	-
005	TF	WAYBI	-	044.9(037.46)	2.9	-	+2 600	-	35°06'23.0"N 128°50'56.2"E	-	RNP APCH	FAF
006	TF	ZIKKO	Y	044.9(037.48)	4.3	-	+1 700	-	35°09'48.1"N 128°54'07.8"E	-	RNP APCH	MAPt
007	TF	PK733	-	045.0(037.51)	9.7	-	+3 500	-	35°17'30.5"N 129°01'20.9"E	-	RNP APCH	-
008	TF	PK734	-	315.0(307.58)	11.07	-	+6 000	-	35°24'15.6"N 128°50'37.2"E	-	RNP APCH	-
009	TF	GAYHA	-	231.3(223.81)	15.05	-	+6 000	-	35°13'22.4"N 128°37'54.4"E	-	RNP APCH	-
010	HM	GAYHA	-	270(262.5)	-	R	-10 000 +6 000	-210	35°13'22.4"N 128°37'54.4"E	-	-	1 min (Inbound timing)

Change : Information of fix name(GAZEL → OVTUS).